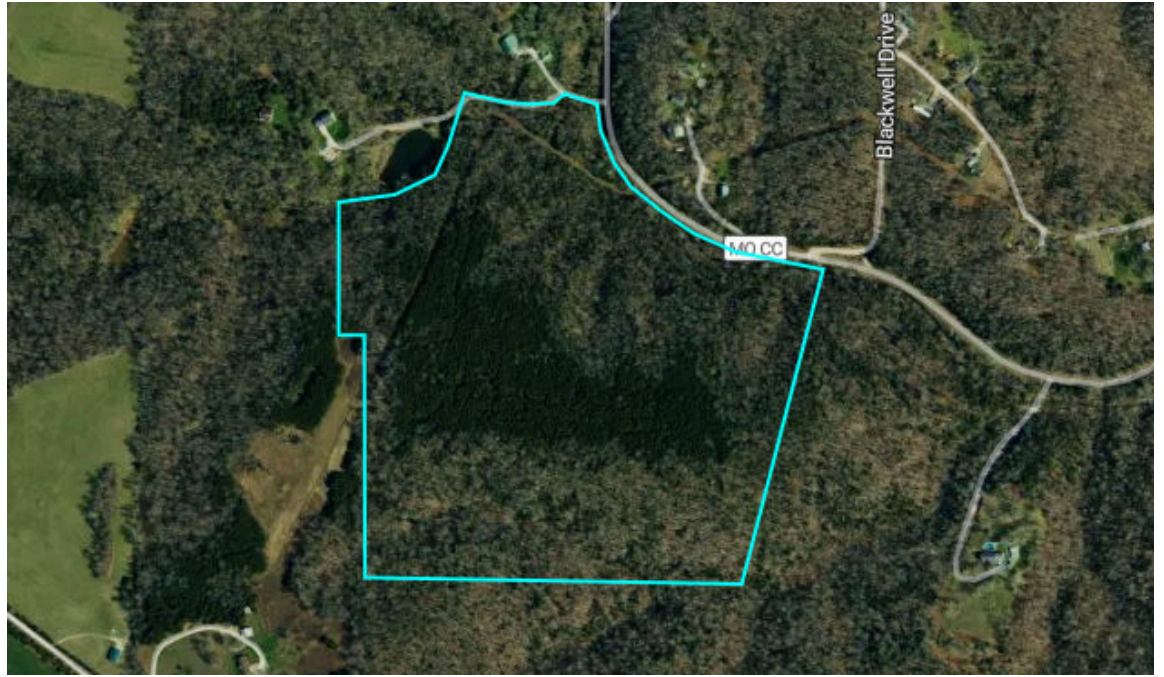
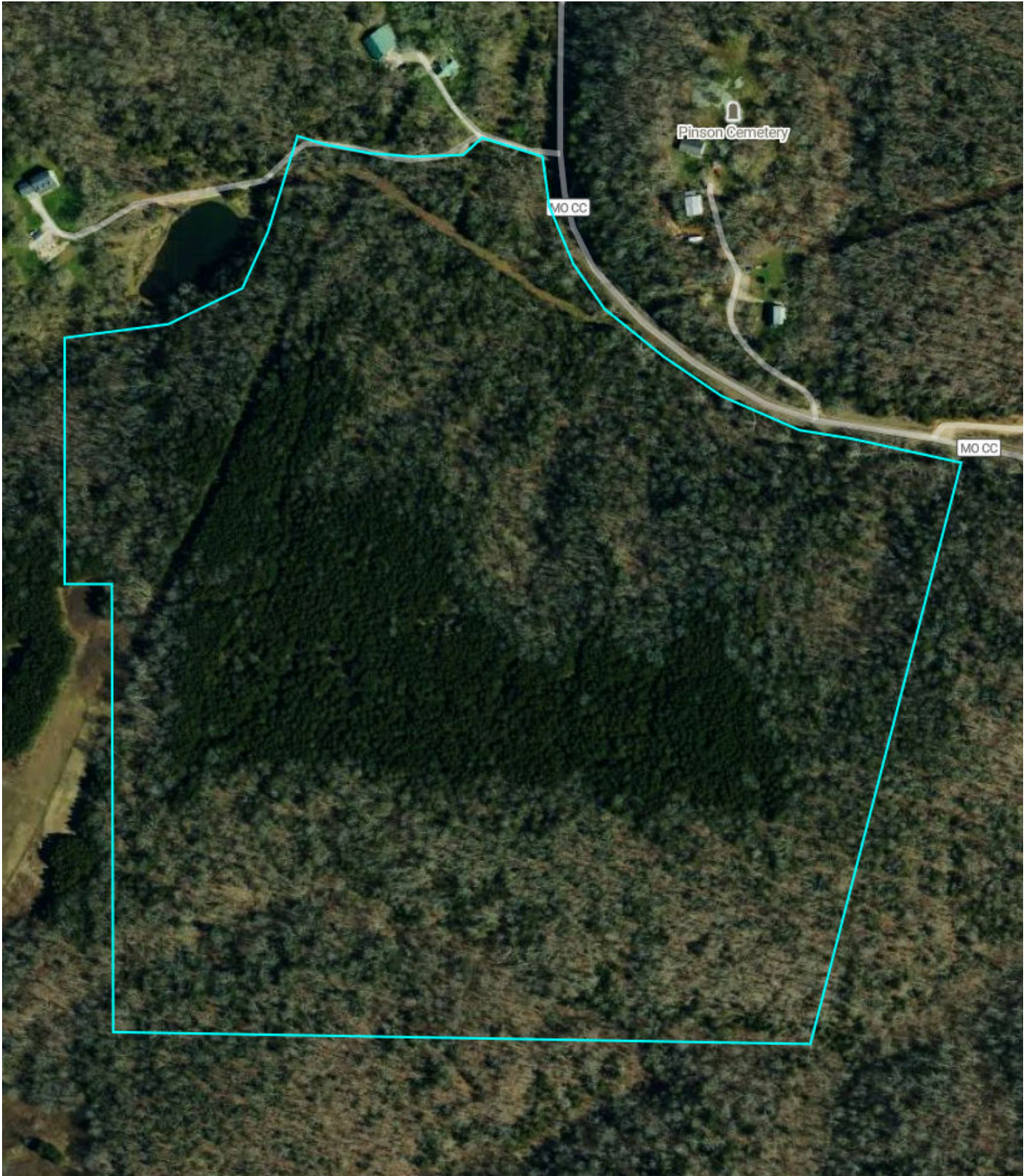


62.6 Acres



# Property Overview

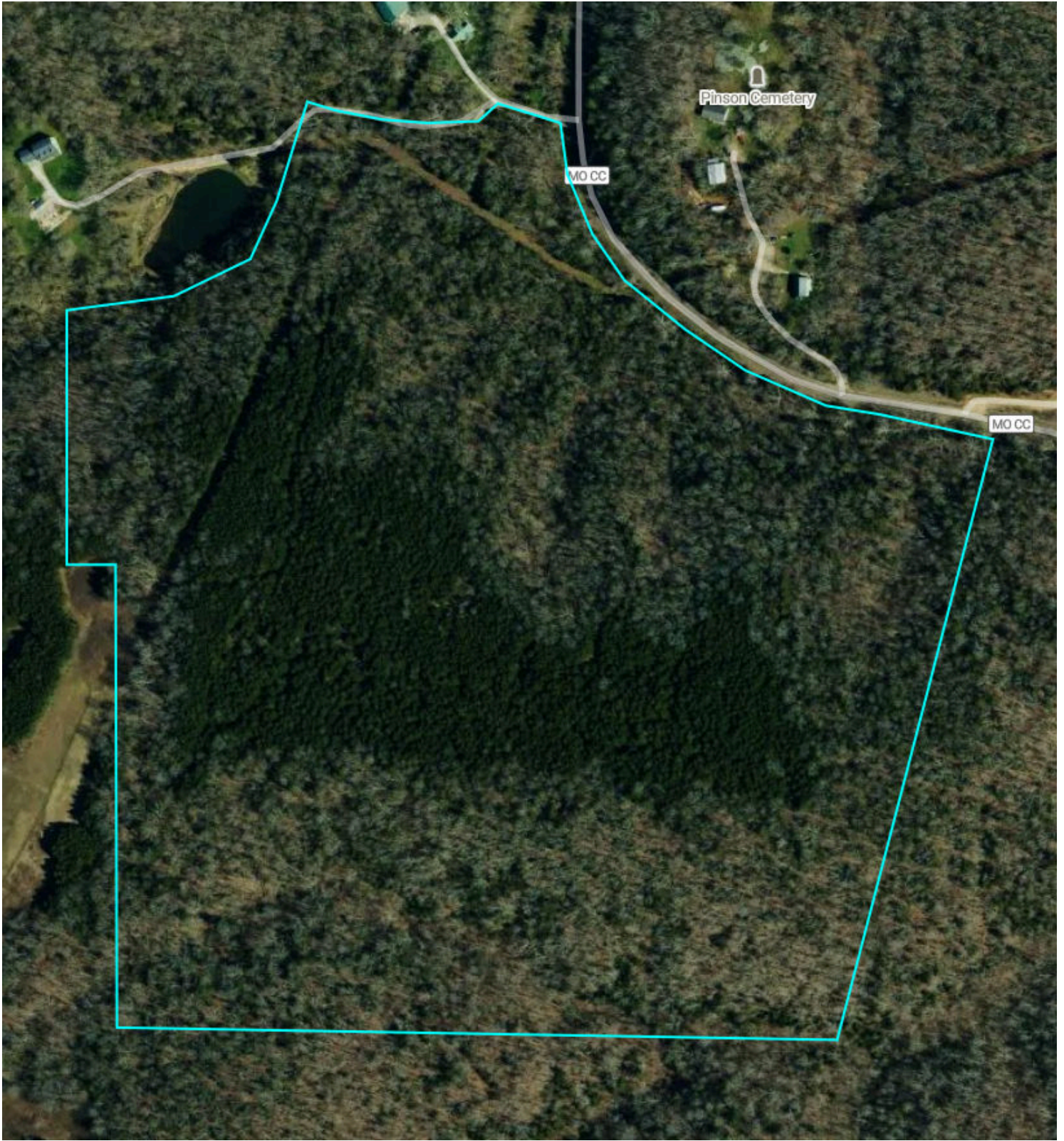
62.6 Acres, 1 Boundary



# Property Overview

St. Francois County, MO

62.6 Acres, Boundary 1 of 1



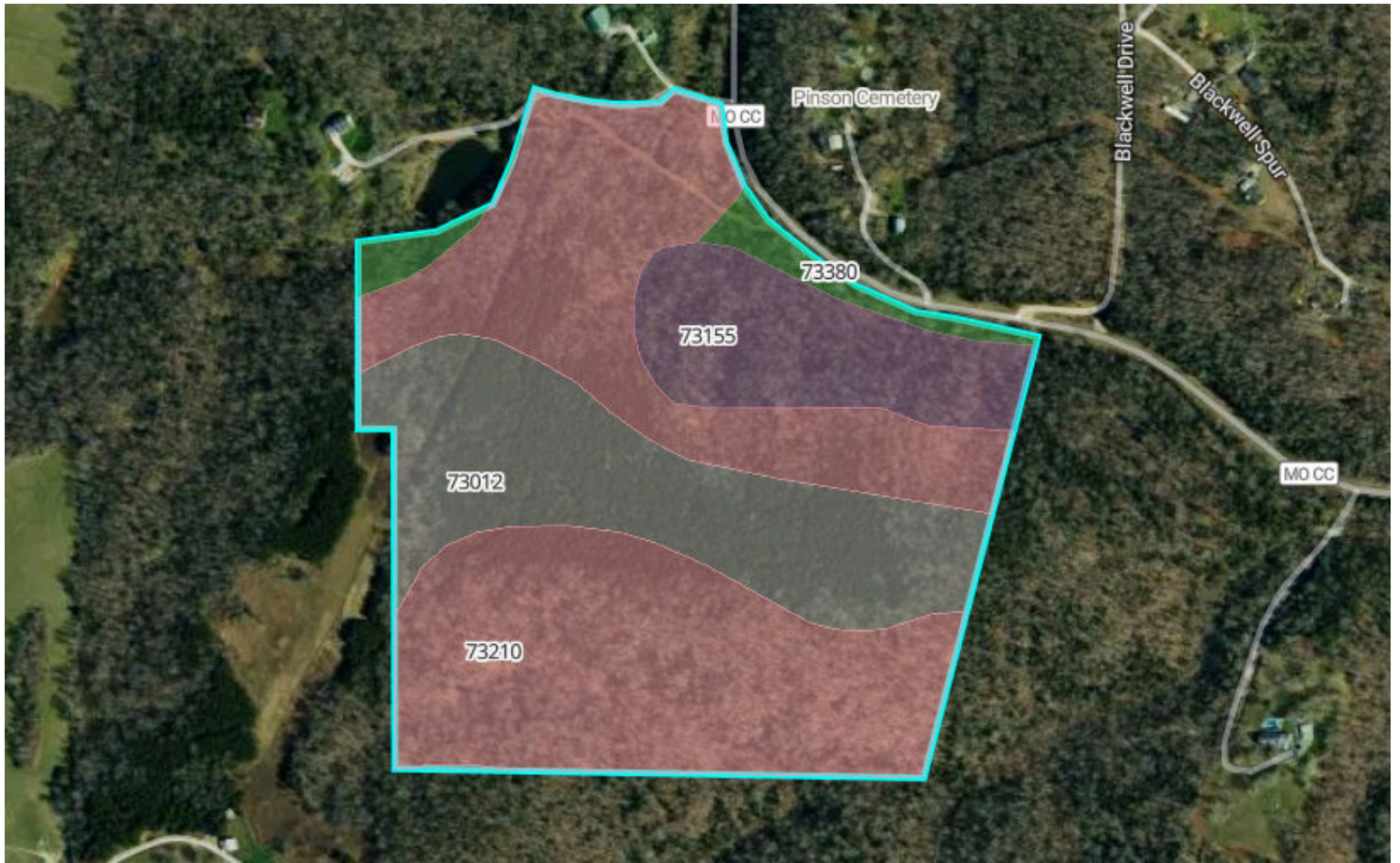
St. Francois County, MO  
Township: 038N

Locations  
06 38N 4E

Acres  
62.63

# Soils

62.6 Acres, 1 Boundary

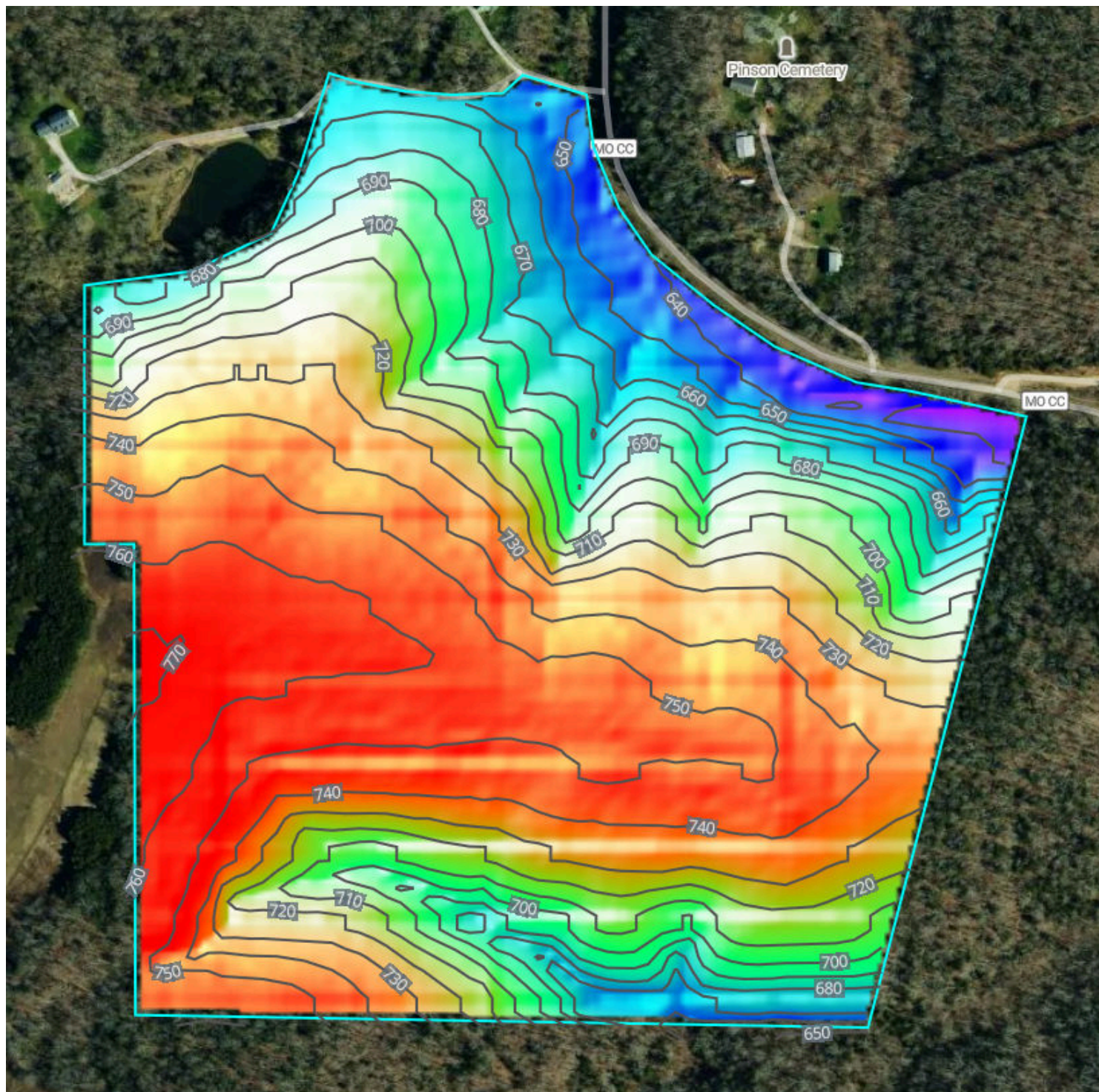


**23.5**/100 NCCPI

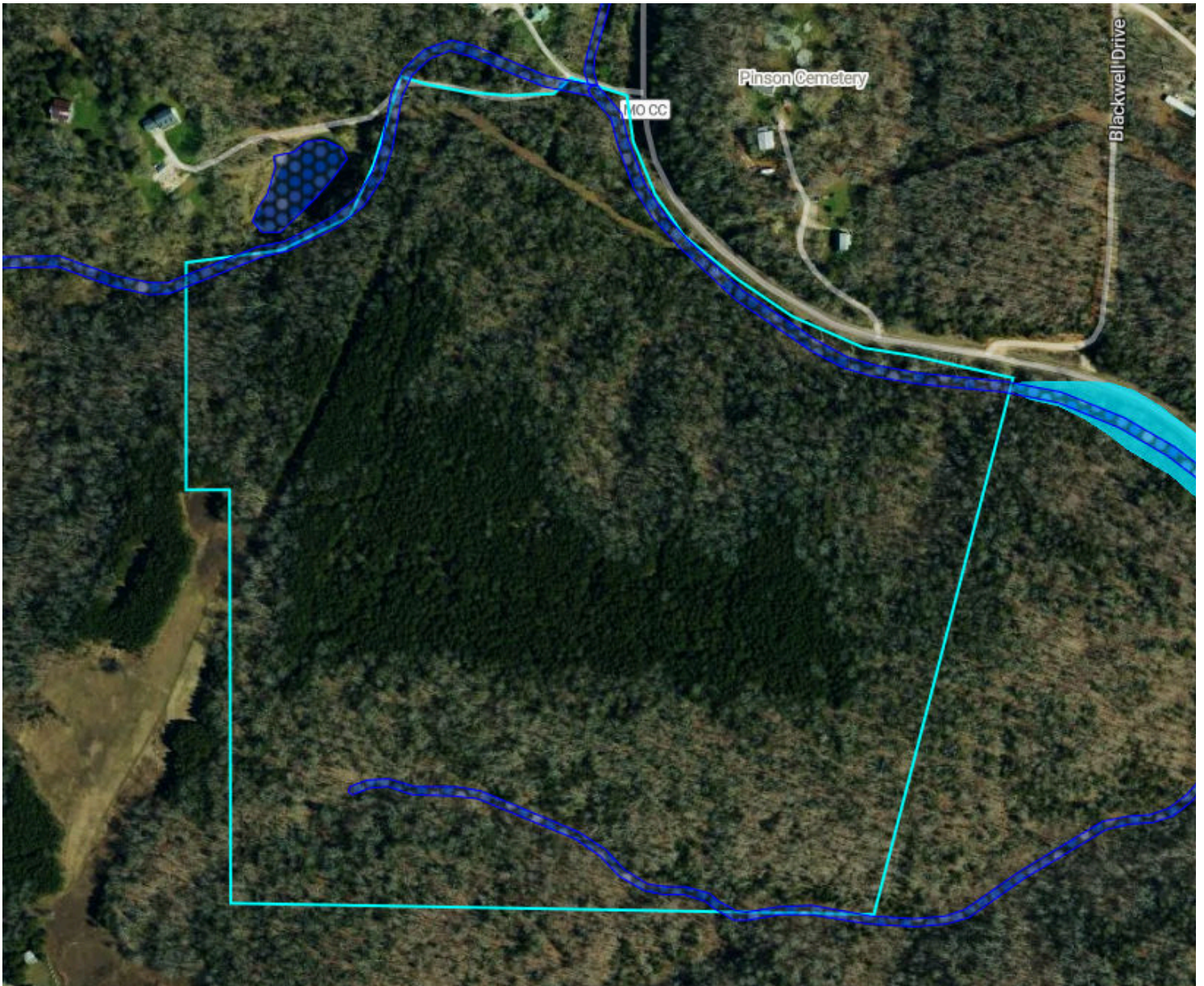
	Code	Soil Description	% of Selection	Acres	Non-IRR Class	IRR Class	NCCPI
●	73210	Goss very cobbly silt loam, 15 to 50 percent slopes, extremely stony	58.0%	36.3	6s	--	9.2
●	73012	Gravois silt loam, 3 to 8 percent slopes	24.9%	15.6	3s	--	55.8
●	73155	Gasconade-Rock outcrop complex, 3 to 35 percent slopes	13.3%	8.4	8	--	19.4
●	73380	Caneyville silt loam, 15 to 20 percent slopes, stony	3.7%	2.3	6s	--	45

# Elevation








62.6 Acres, 1 Boundary



Source: USGS 3 Meter Dem      Interval: 10 feet      Range: 149 feet      Min: 622.4 feet      Max: 771.5 feet  
Slope: 13.5%      Min: 0.1%      Max: 45.9%



## Flood Zone Hazard

-  0.2% annual flood hazard
-  1% annual flood hazard
-  Future 1% annual flood hazard
-  Increased risk due to levee
-  Reduced risk due to levee
-  Regulatory Floodway
-  Special Floodway
- Wetlands

# Historical Imagery

62.6 Acres, 1 Boundary

2024



2022

