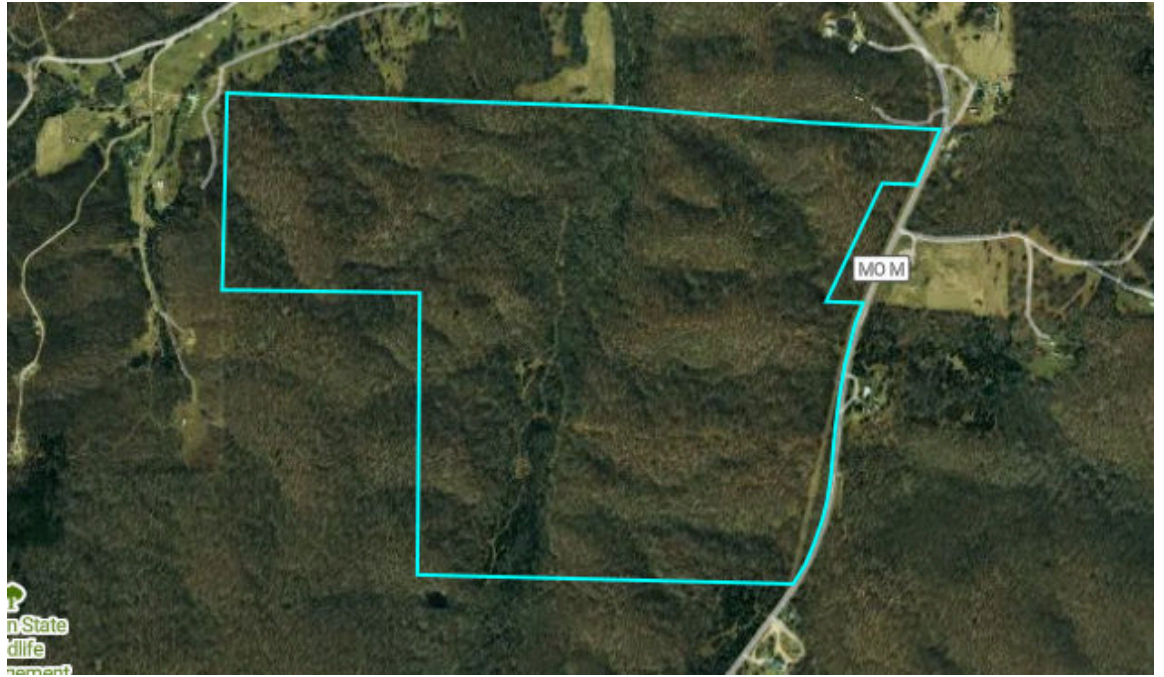
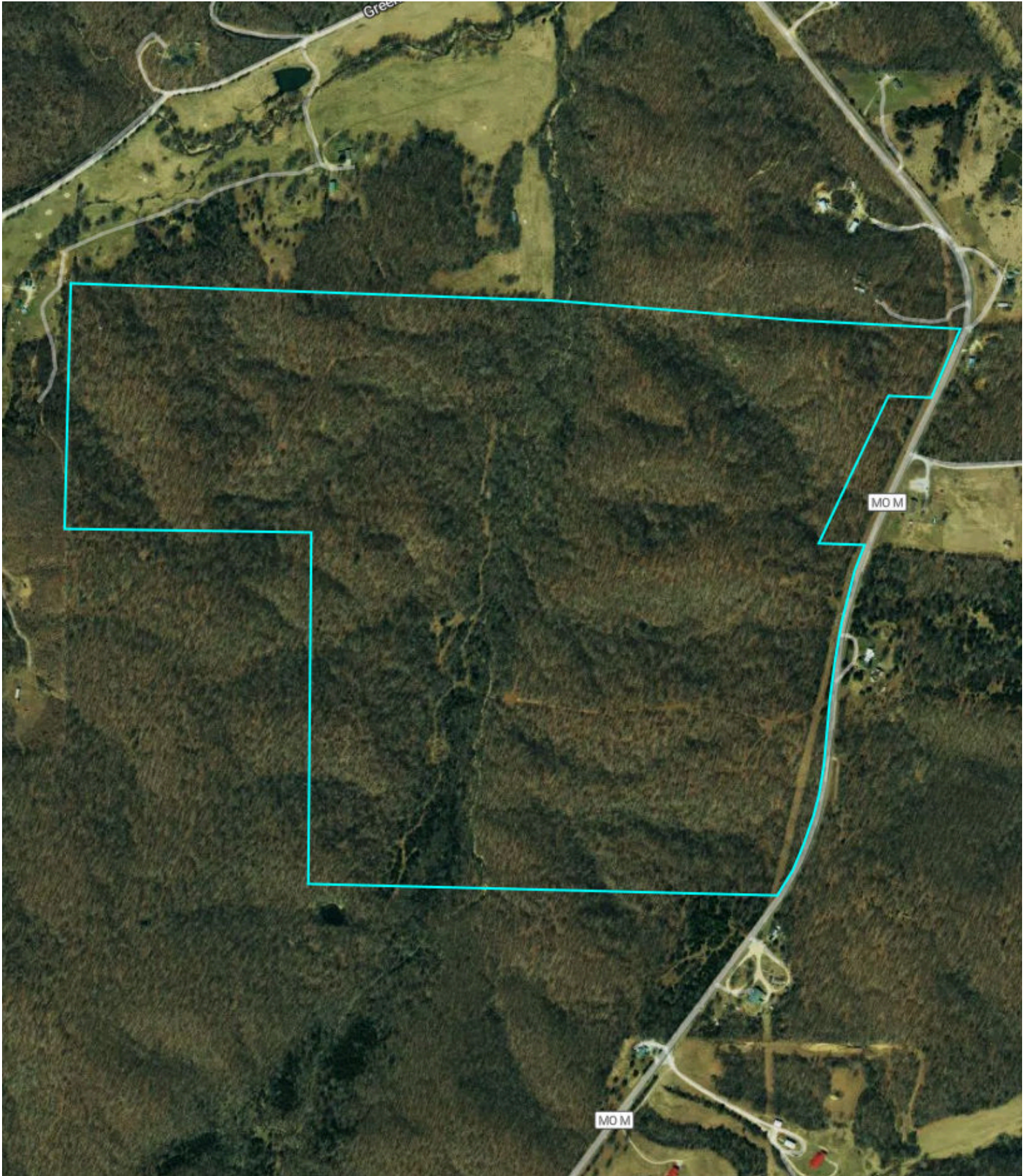


252.2 Acres



Property Overview

252.2 Acres, 1 Boundary



Property Overview

Texas County, MO

252.2 Acres, Boundary 1 of 1



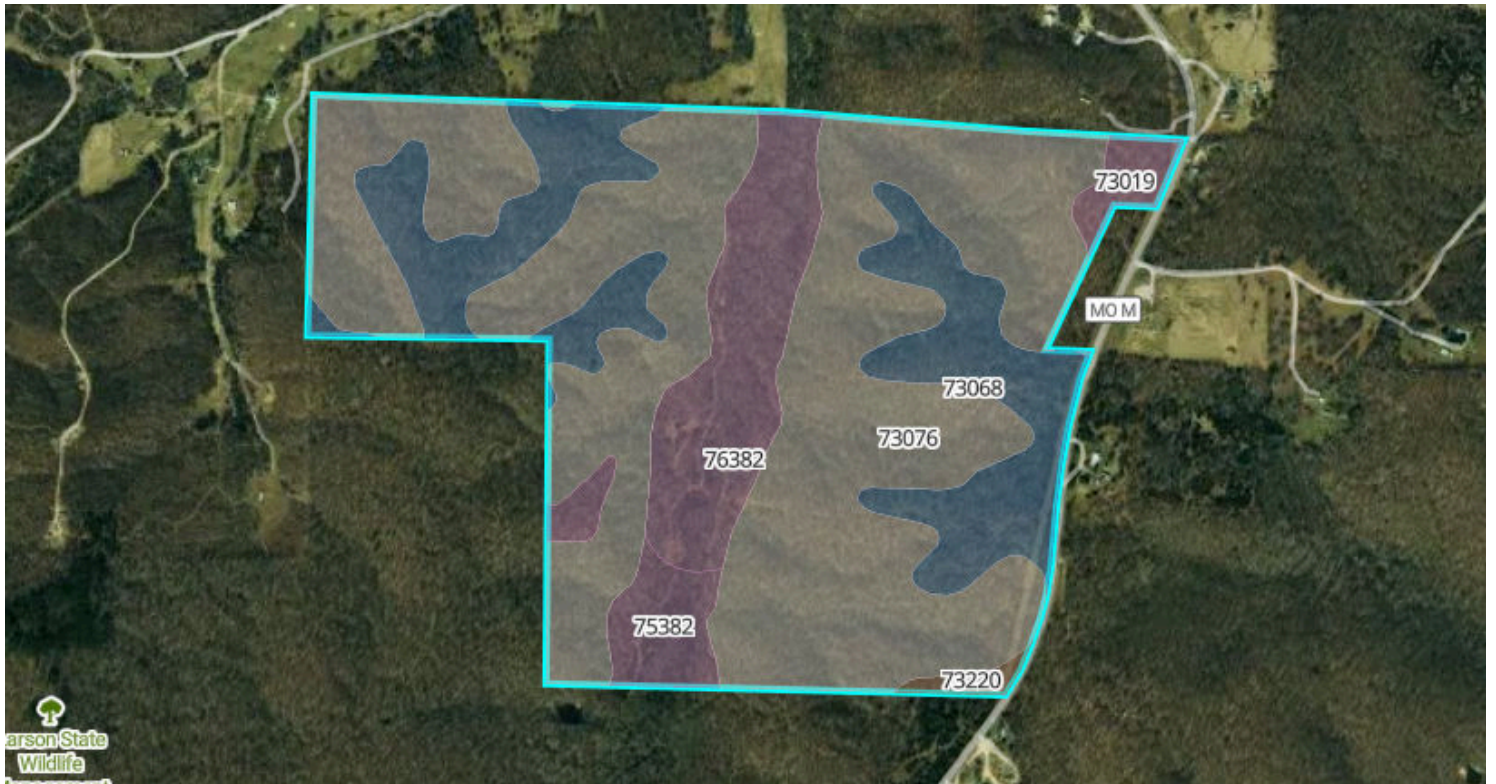
Texas County, MO
Township: 029N

Locations
28 29N 11W

Acres
252.24

Soils

252.2 Acres, 1 Boundary



30.8 / 100 NCCPI

	Code	Soil Description	% of Selection	Acres	Non-IRR Class	IRR Class	NCCPI
●	73076	Mano-Ocie complex, 15 to 35 percent slopes, stony	61.3%	154.7	6e	--	13.4
●	73068	Tick very gravelly silt loam, 3 to 15 percent slopes, stony	20.5%	51.8	4e	--	52.6
●	76382	Cedargap gravelly loam, 0 to 2 percent slopes, frequently...	11.4%	28.8	3w	--	70
●	75382	Cedargap gravelly loam, 1 to 3 percent slopes, frequently...	3.4%	8.6	3w	--	62.6
●	73019	Poynor very gravelly silt loam, 1 to 8 percent slopes	2.6%	6.6	3e	--	50.5

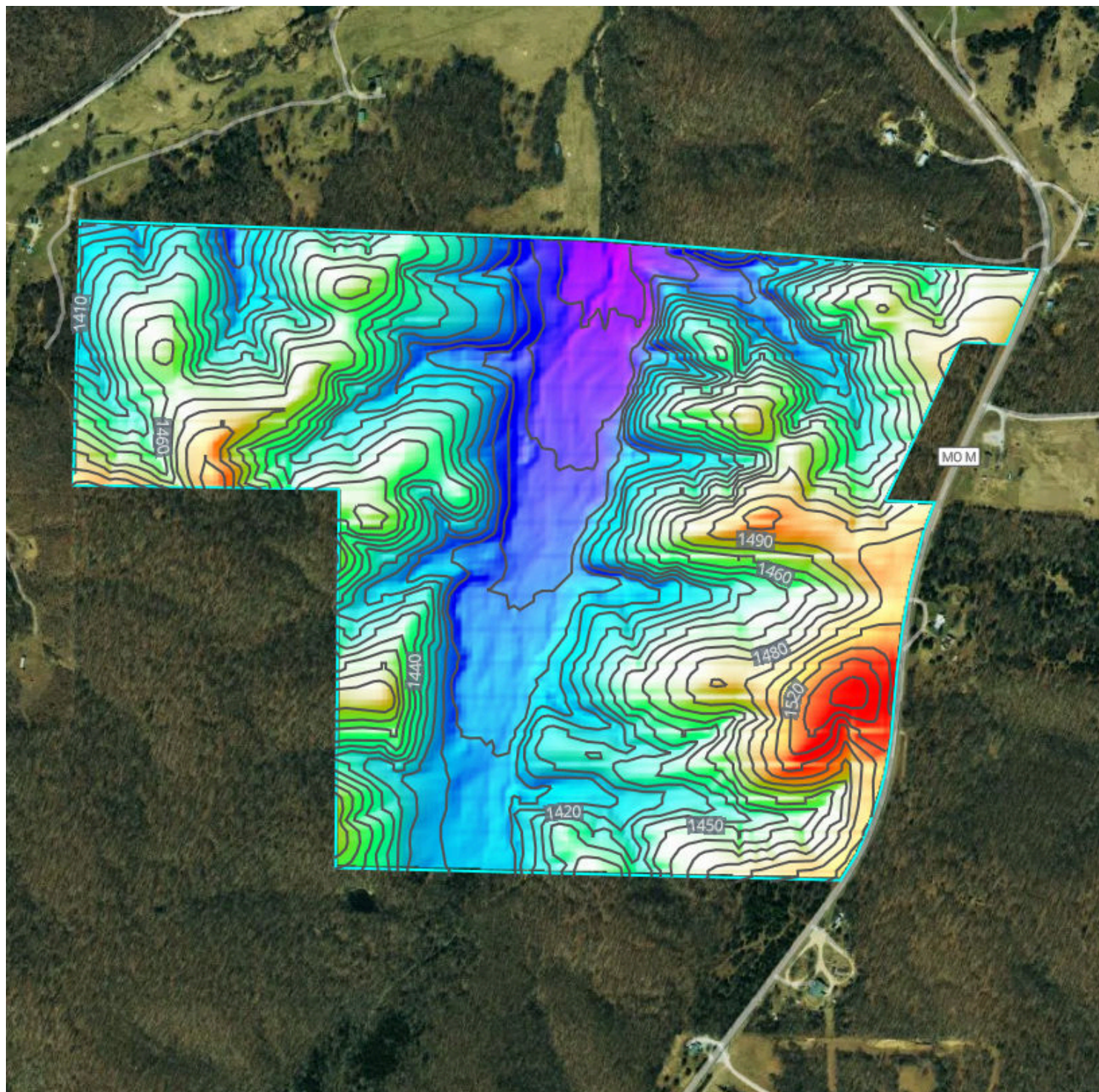
Soils

252.2 Acres, 1 Boundary

	Code	Soil Description	% of Selection	Acres	Non-IRR Class	IRR Class	NCCPI
●	73220	Poynor extremely gravelly silt loam, 8 to 15 percent slopes	0.7%	1.7	4e	--	53.6

Elevation

252.2 Acres, 1 Boundary



1,352.6 feet

1,546.0 feet

Source: USGS 3 Meter Dem

Interval: 10 feet

Range: 193.4 feet

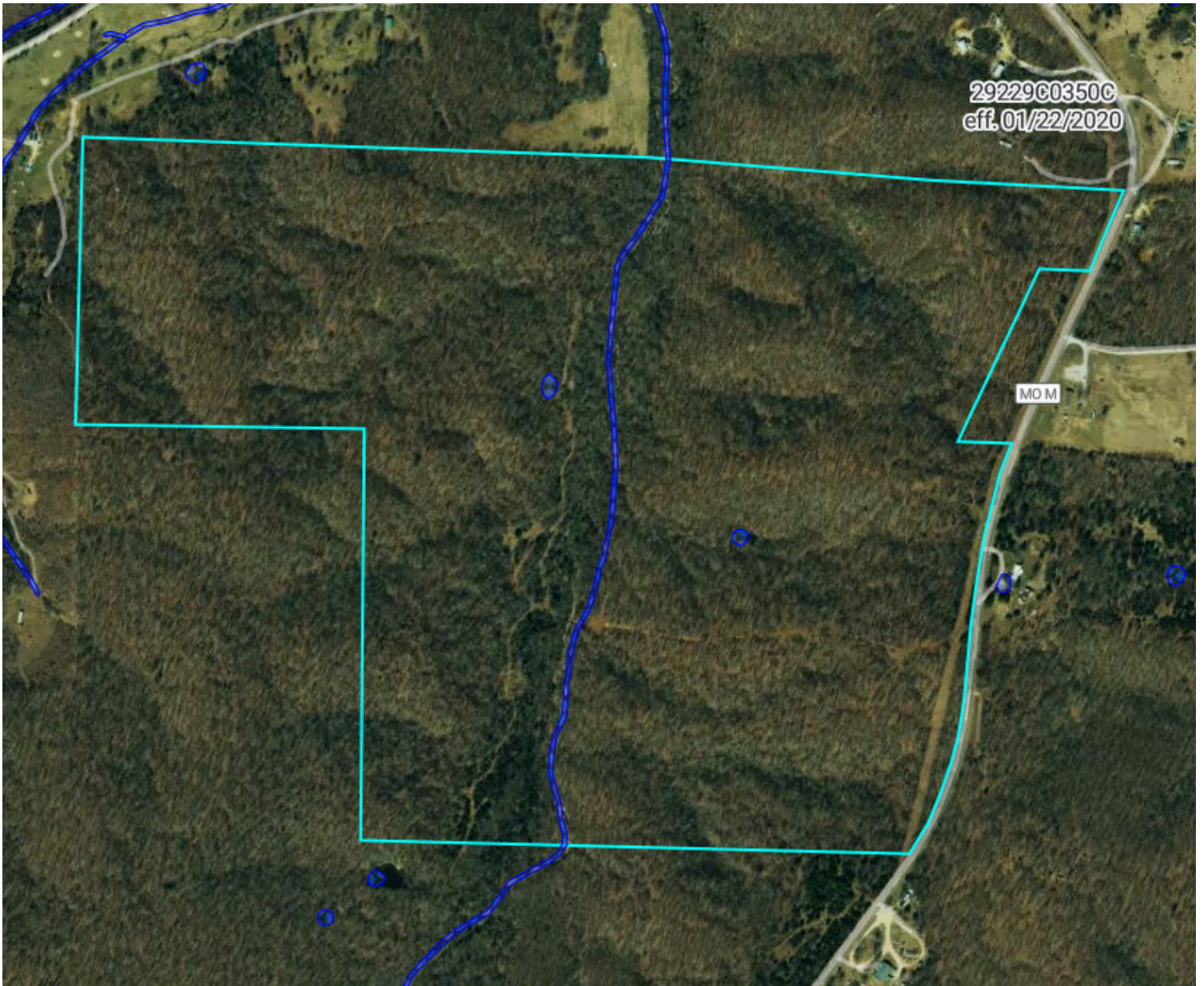
Min: 1352.6 feet

Max: 1546 feet









Slope: 14.6%

Min: 0.1%

Max: 50.1%



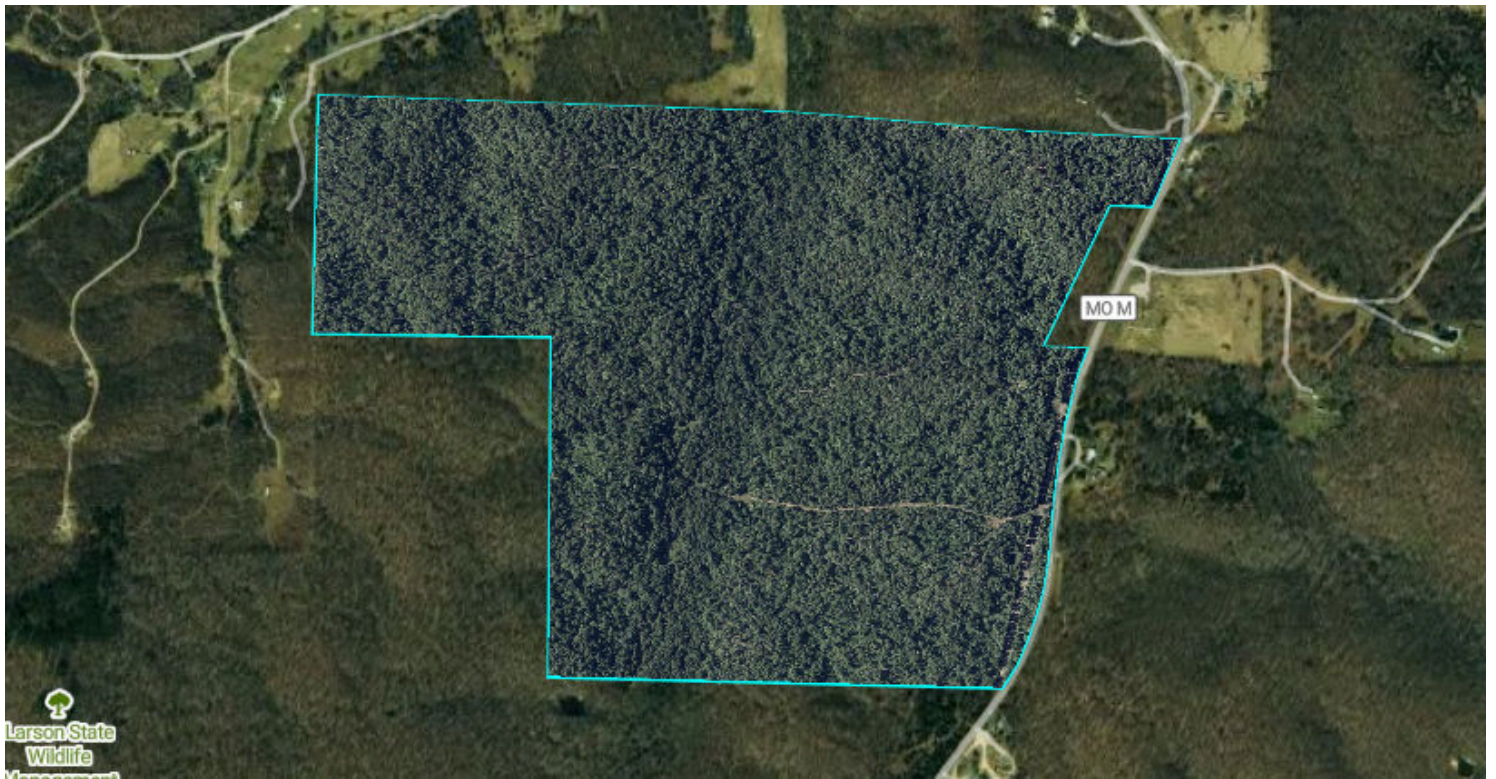
Flood Zone Hazard

-  0.2% annual flood hazard
-  1% annual flood hazard
-  Future 1% annual flood hazard
-  Increased risk due to levee
-  Reduced risk due to levee
-  Regulatory Floodway
-  Special Floodway
-  Wetlands

Historical Imagery

252.2 Acres, 1 Boundary

2024



2022

