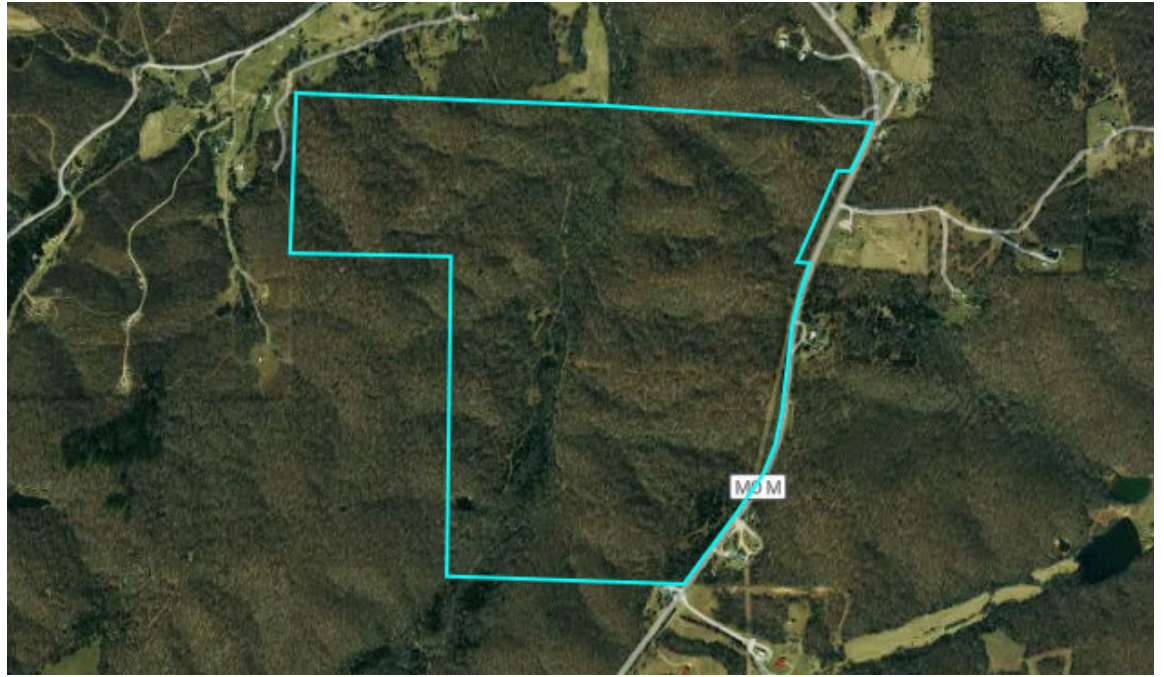
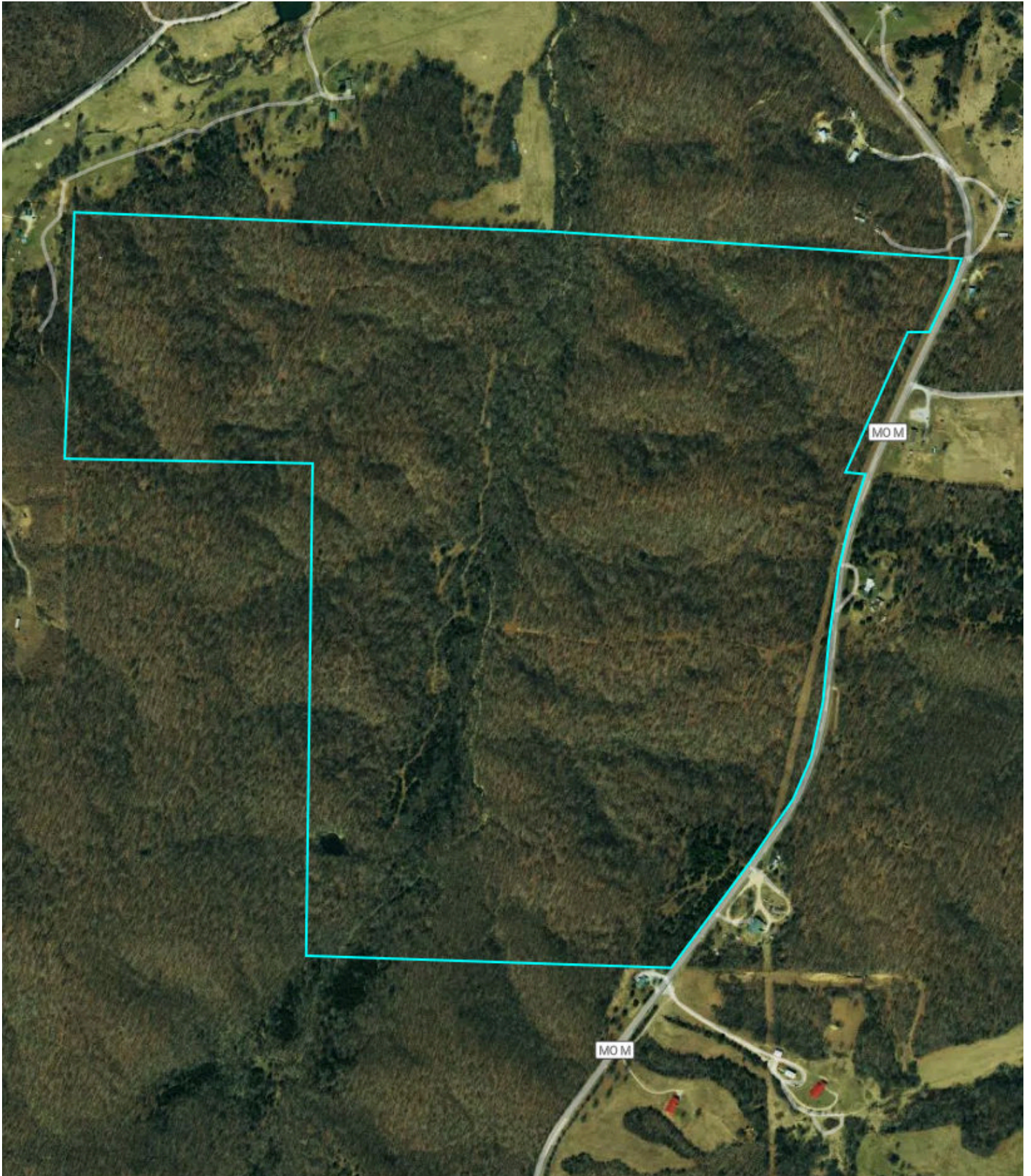


294.9 Acres



Property Overview

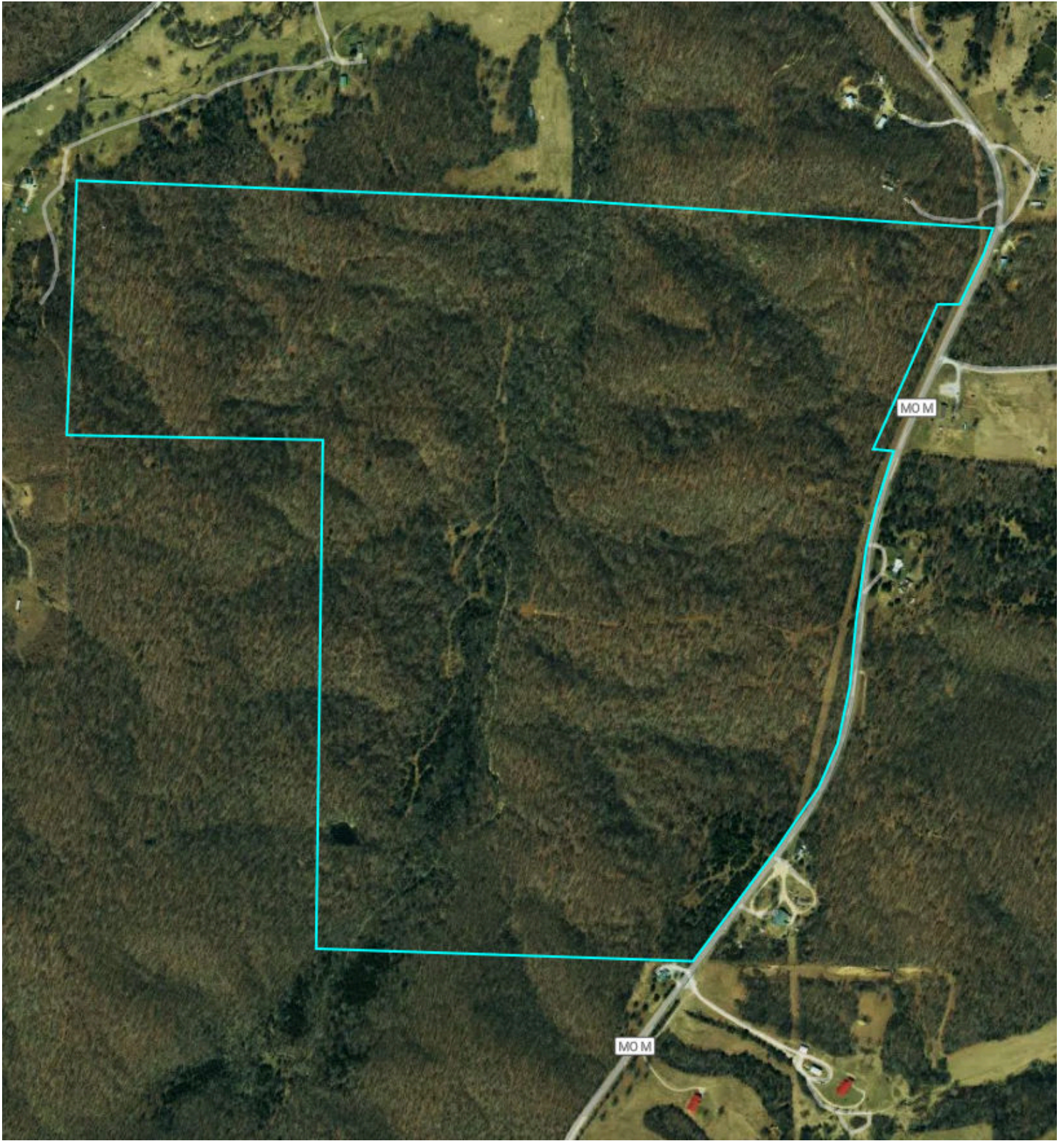
294.9 Acres, 1 Boundary



Property Overview

Texas County, MO

294.9 Acres, Boundary 1 of 1



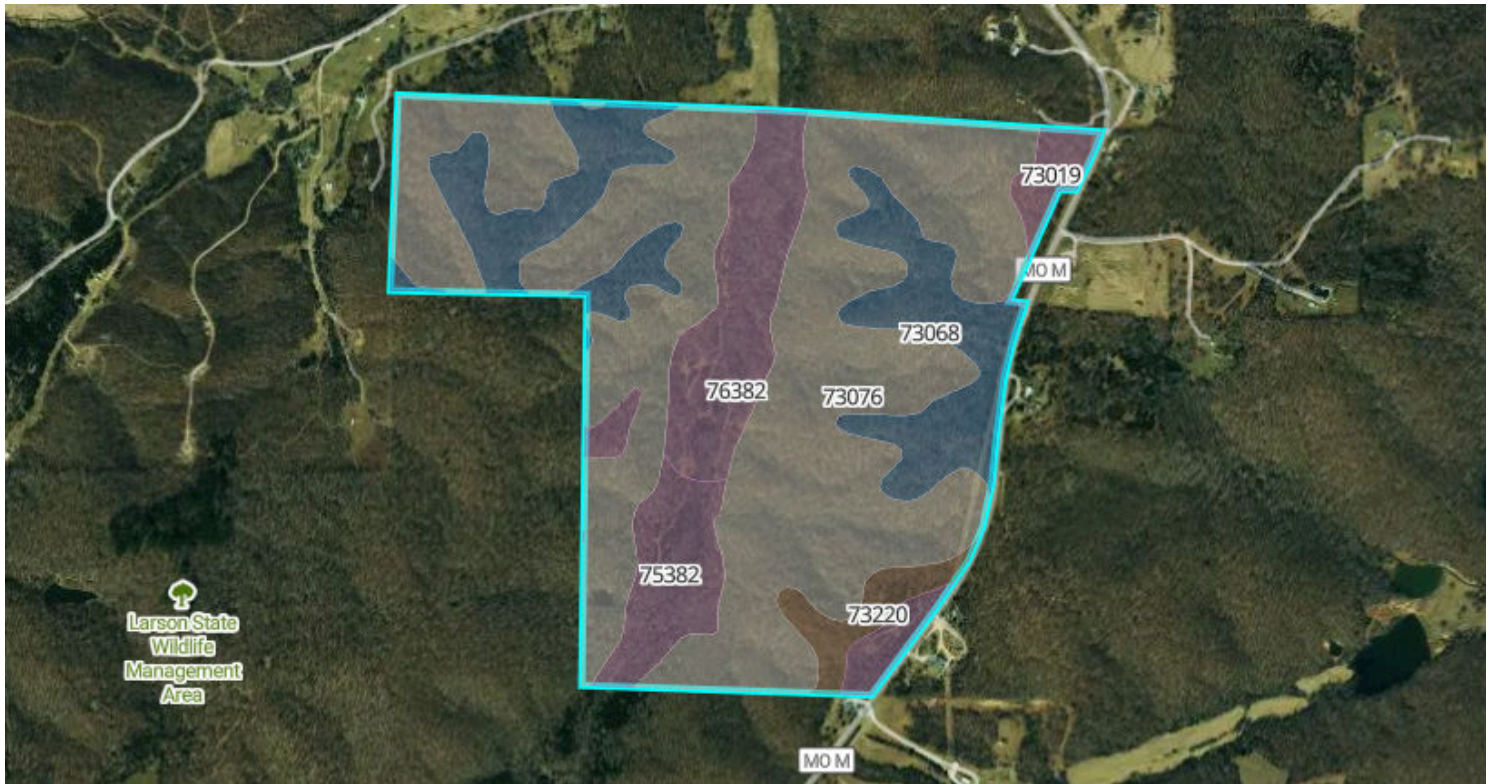
Texas County, MO
Township: 029N

Locations
28 29N 11W

Acres
294.93

Soils

294.9 Acres, 1 Boundary



31.5/100 NCCPI

	Code	Soil Description	% of Selection	Acres	Non-IRR Class	IRR Class	NCCPI
●	73076	Mano-Ocie complex, 15 to 35 percent slopes, stony	59.6%	175.8	6e	--	13.4
●	73068	Tick very gravelly silt loam, 3 to 15 percent slopes, stony	17.5%	51.8	4e	--	52.6
●	76382	Cedargap gravelly loam, 0 to 2 percent slopes, frequently...	9.7%	28.7	3w	--	70
●	75382	Cedargap gravelly loam, 1 to 3 percent slopes, frequently...	5.9%	17.4	3w	--	62.6
●	73019	Poynor very gravelly silt loam, 1 to 8 percent slopes	4.3%	12.7	3e	--	50.5

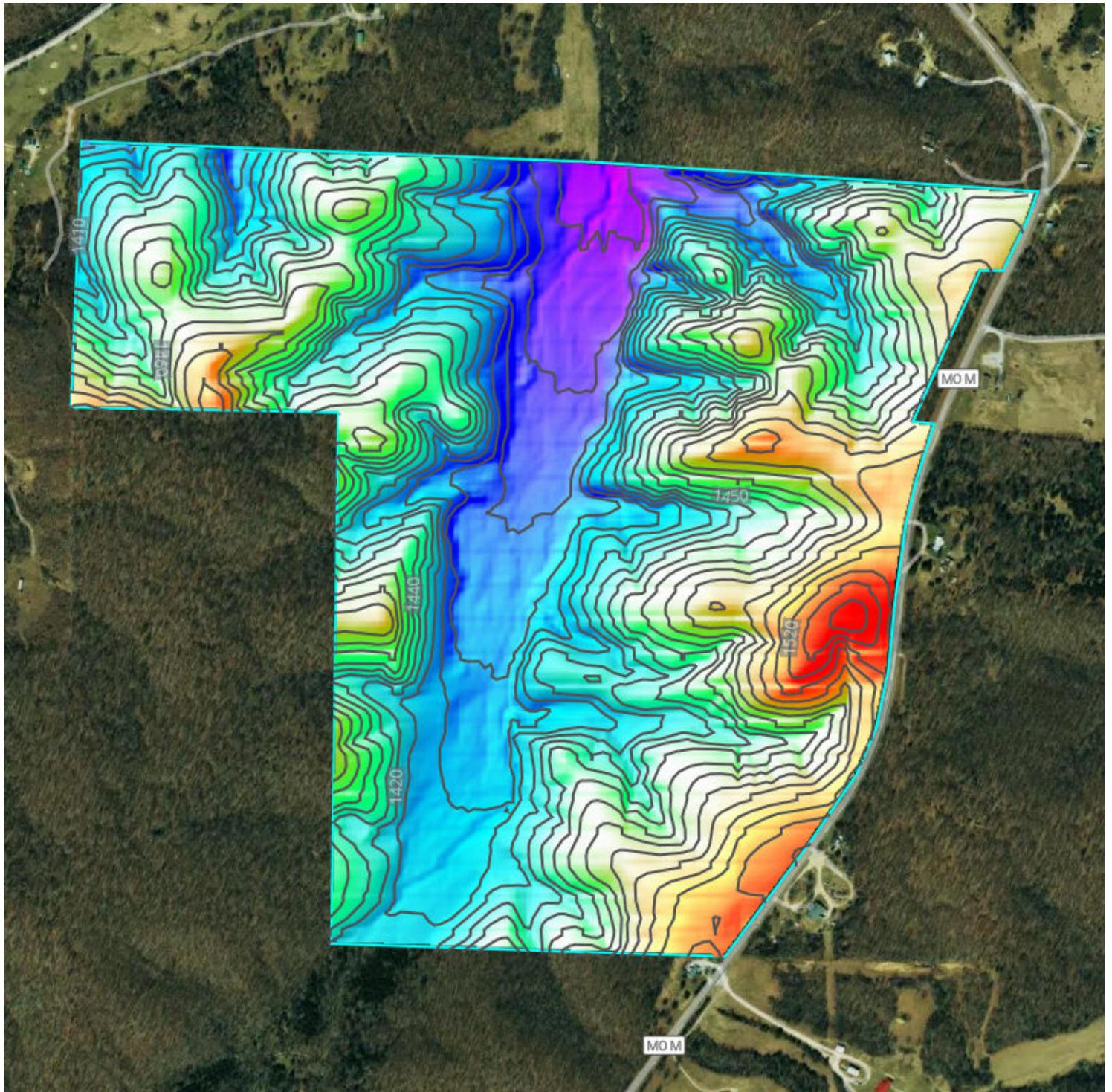
Soils

294.9 Acres, 1 Boundary

	Code	Soil Description	% of Selection	Acres	Non-IRR Class	IRR Class	NCCPI
●	73220	Poynor extremely gravelly silt loam, 8 to 15 percent slopes	2.9%	8.5	4e	--	53.6

Elevation

294.9 Acres, 1 Boundary



1,354.0 feet

1,546.0 feet

Source: USGS 3 Meter Dem

Interval: 10 feet

Range: 192 feet

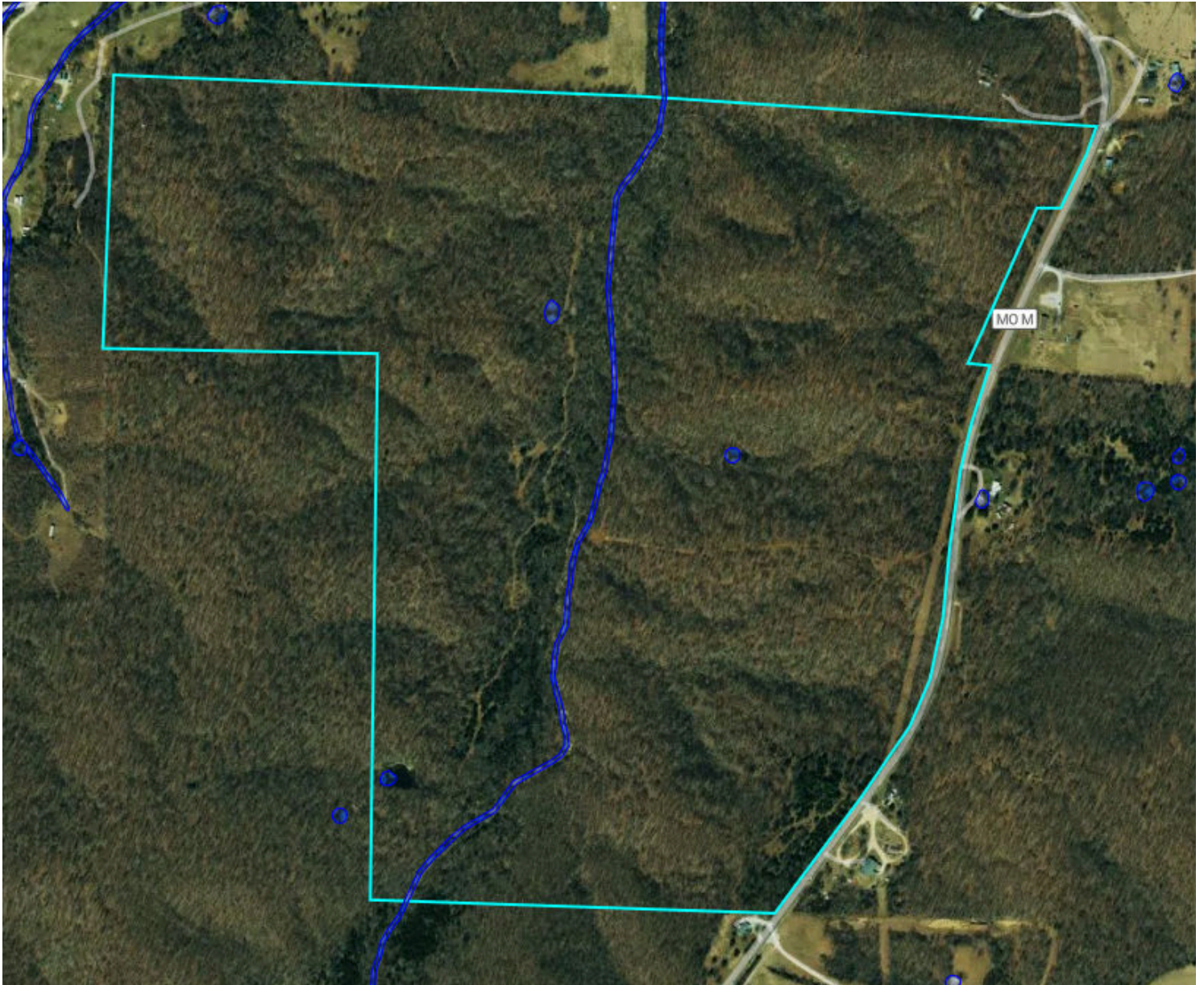
Min: 1354 feet

Max: 1546 feet








Slope: 14%

Min: 0.1%

Max: 50.1%



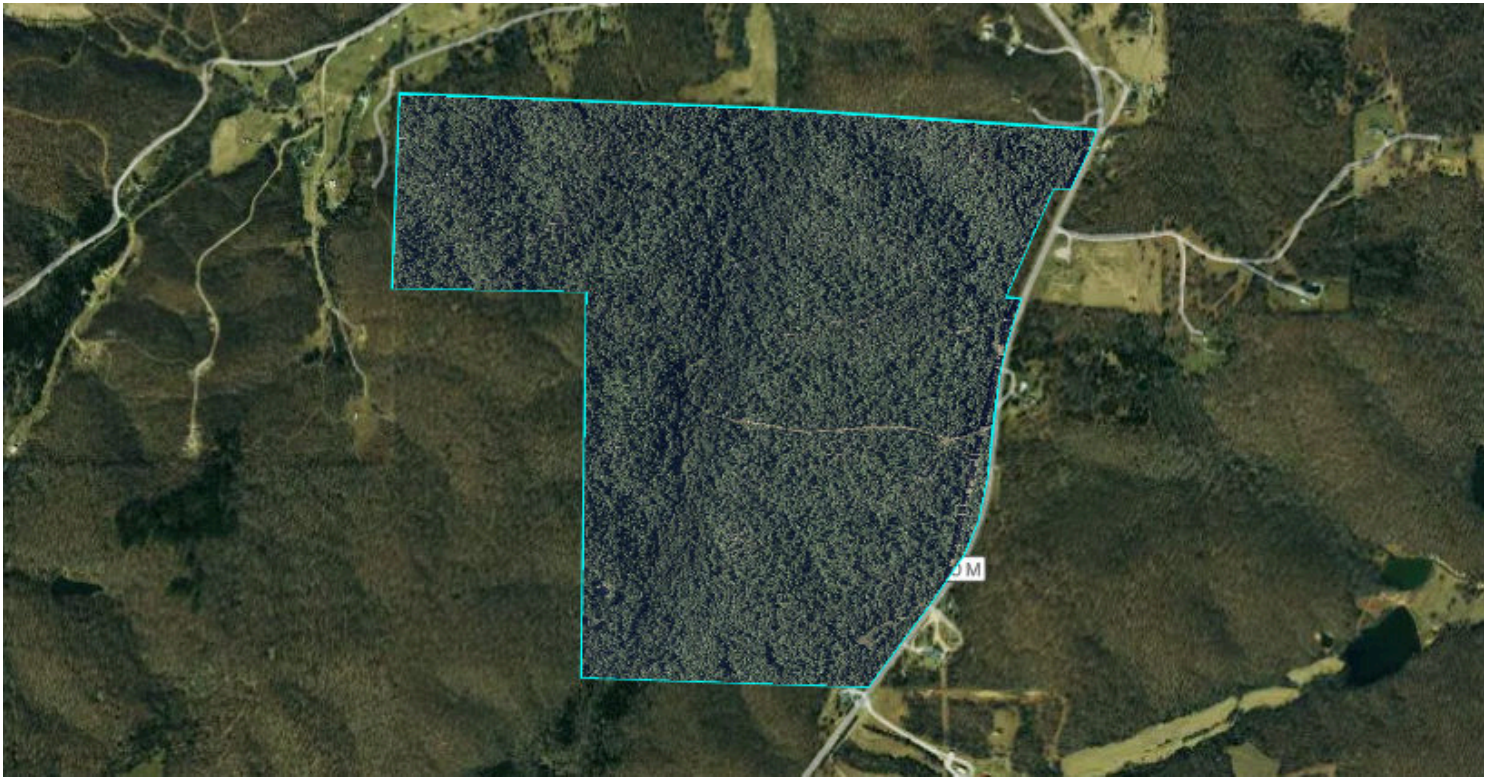
Flood Zone Hazard

-  0.2% annual flood hazard
-  1% annual flood hazard
-  Future 1% annual flood hazard
-  Increased risk due to levee
-  Reduced risk due to levee
-  Regulatory Floodway
-  Special Floodway
- Wetlands

Historical Imagery

294.9 Acres, 1 Boundary

2024



2022

