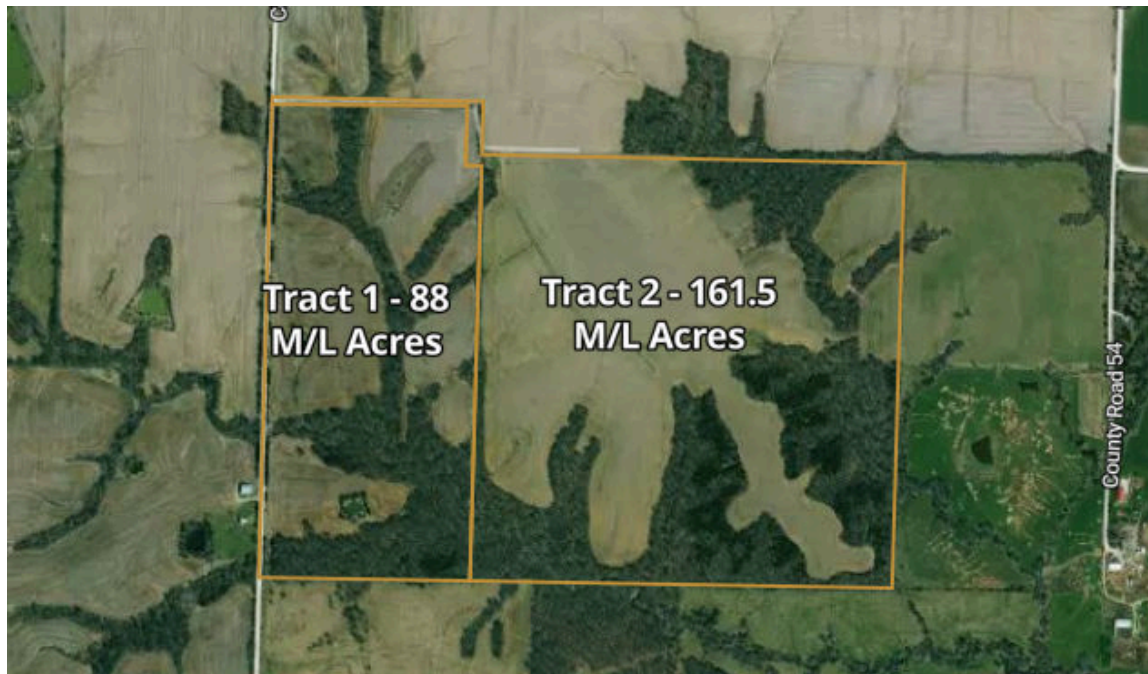




249.5 Acres



Property Overview



249.5 Acres, 2 Boundaries



Property Overview



Knox County, MO

88.0 Acres, Boundary 1 of 2



Knox County, MO
Township: 063N

Locations
25 63N 11W

Acres
88.04

Property Overview



Knox County, MO

161.5 Acres, Boundary 2 of 2



Knox County, MO
Township: 063N

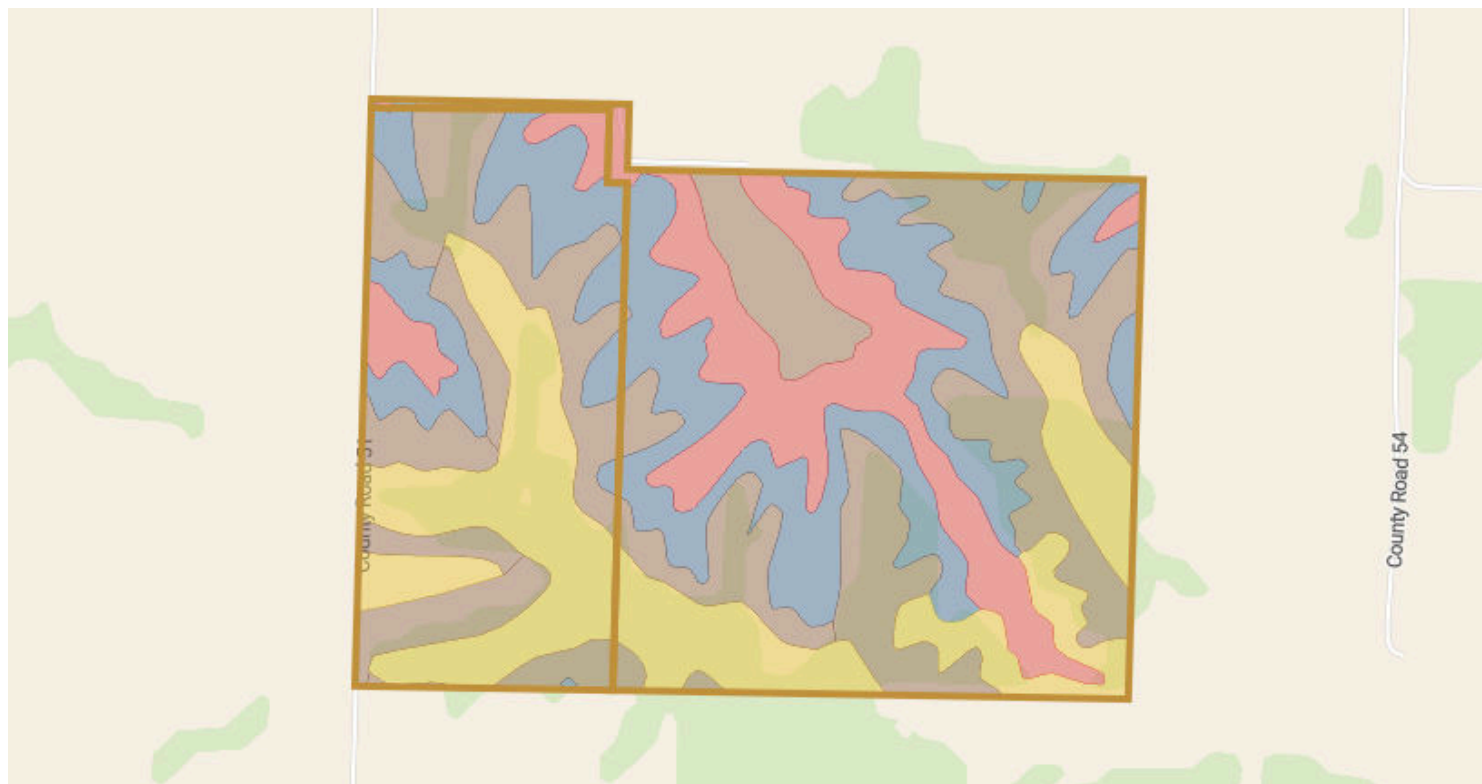
Locations
25 63N 11W

Acres
161.51

Soils



249.5 Acres, 2 Boundaries



64.3/100 NCCPI

	Code	Soil Description	% of Selection	Acres	Non-IRR Class	IRR Class	NCCPI
●	60022	Leonard silt loam, 1 to 6 percent slopes, eroded	24.6%	61.5	3e	--	60.5
●	30057	Gara loam, 14 to 18 percent slopes	18.9%	47.1	6e	--	66.2
●	36072	Blackoar silt loam, 1 to 4 percent slopes, frequently flooded	18.1%	45.2	3w	--	69.9
●	30106	Kilwinning silt loam, 1 to 5 percent slopes	15.1%	37.8	3e	--	65.5
●	30039	Armstrong loam, 9 to 14 percent slopes, eroded	14.8%	37	4e	--	62.9

Soils



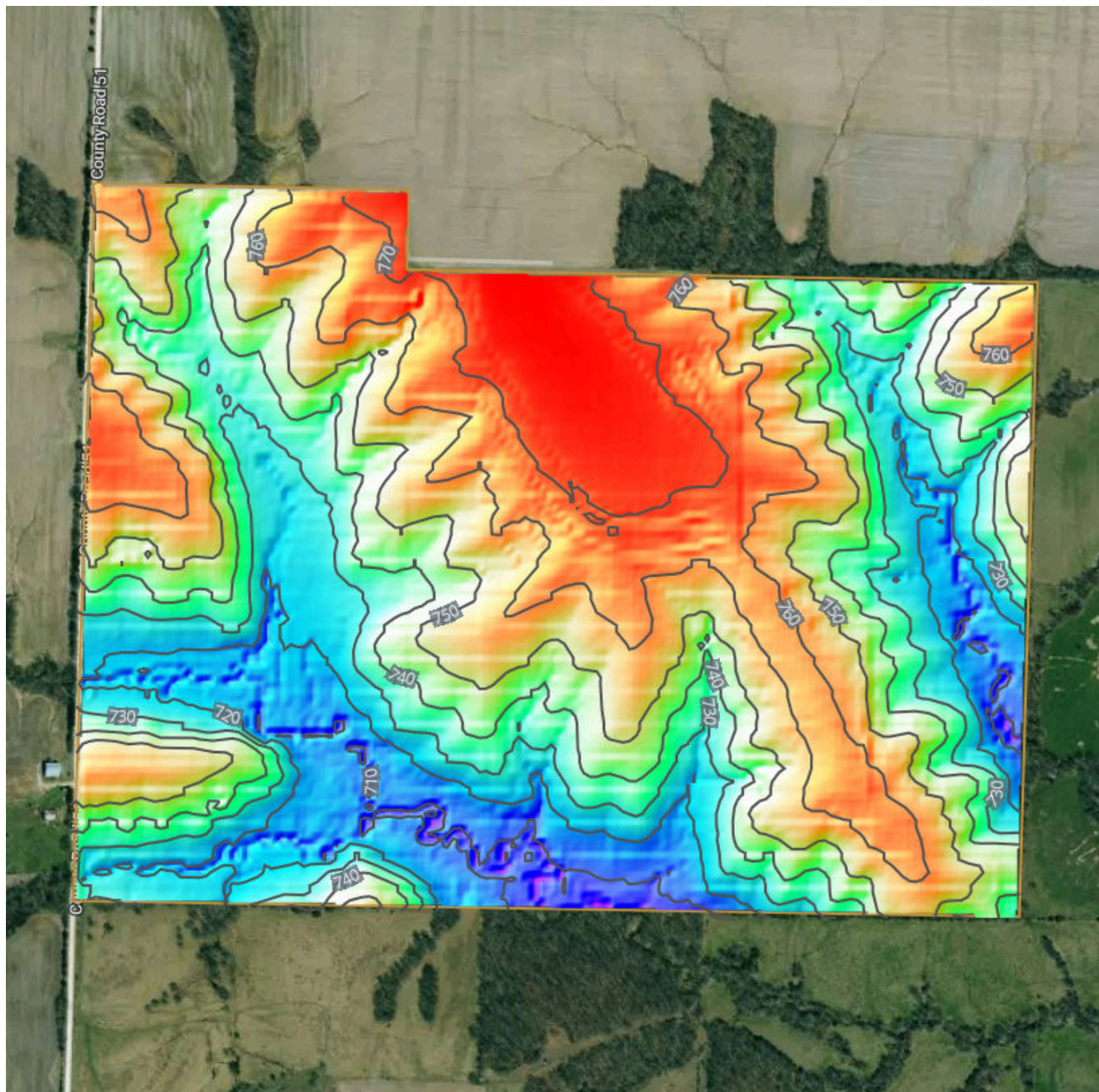
249.5 Acres, 2 Boundaries

	Code	Soil Description	% of Selection	Acres	Non-IRR Class	IRR Class	NCCPI
●	30036	Armstrong loam, 5 to 9 percent slopes	4.7%	11.9	3e	--	55.6
●	50057	Putnam silt loam, 1 to 3 percent slopes	3.6%	9.1	3w	--	65.1

Elevation



249.5 Acres, 2 Boundaries



700.4 feet

776.6 feet

Source: USGS 3 Meter Dem

Interval: 10 feet

Range: 76.2 feet

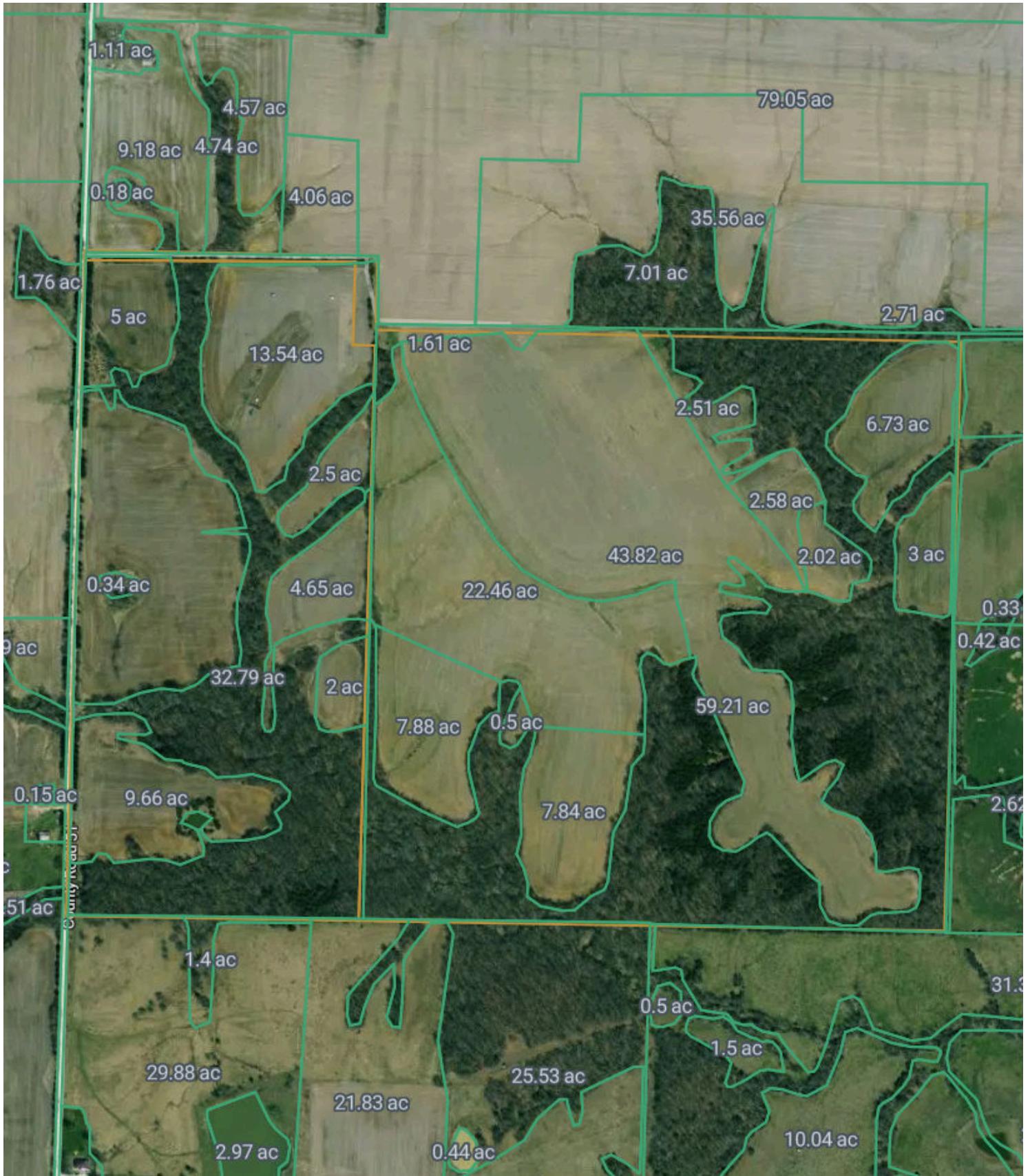
Min: 700.4 feet

Max: 776.6 feet

Slope: 6.5%

Min: 0%

Max: 46.8%



Historical Imagery



249.5 Acres, 2 Boundaries

2024



2022





Element	Title	Data	Description
	Tract 2 - 161.5 M/L Acres	--	--
	Tract 1 - 88 M/L Acres	--	--

Attached Images



249.5 Acres, 2 Boundaries

Tract 2 - 161.5 M/L Acres



Attached Images



249.5 Acres, 2 Boundaries

Tract 1 - 88 M/L Acres

