

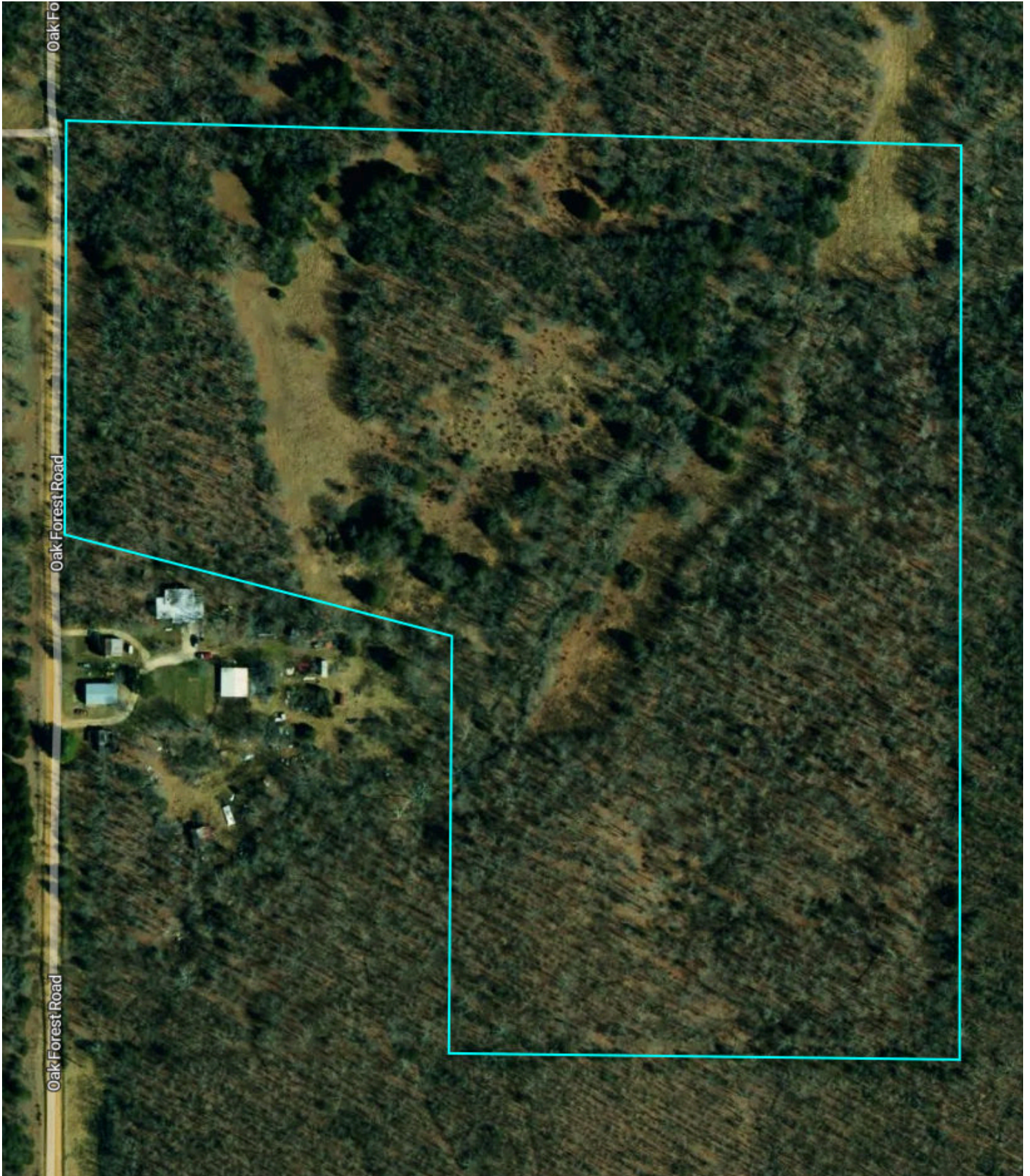
32.5 Acres



Kevin Riley Maries County Comps

Overview

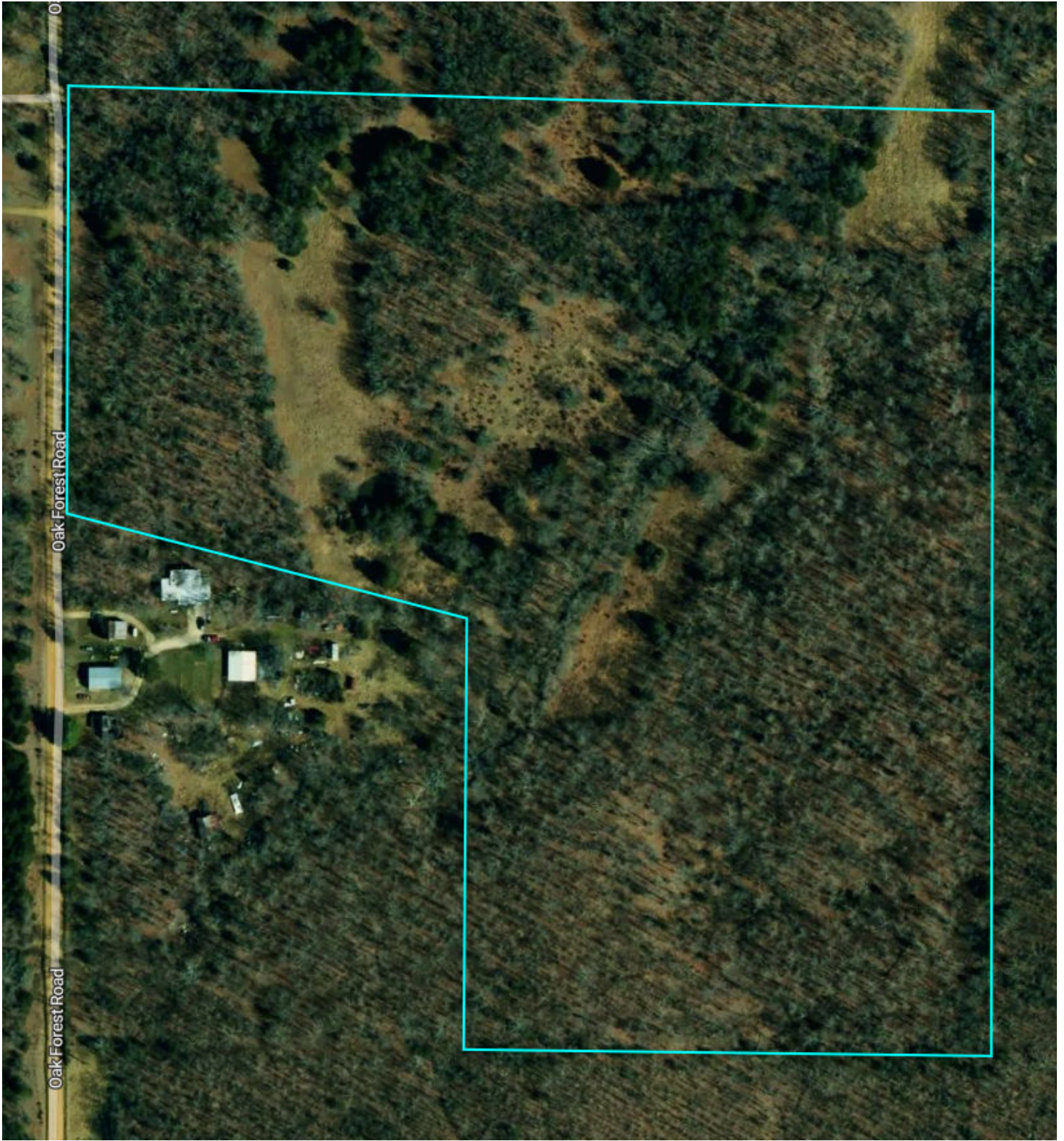
32.5 Acres, 1 Boundary



Overview

Gasconade County, MO

32.5 Acres, Boundary 1 of 1



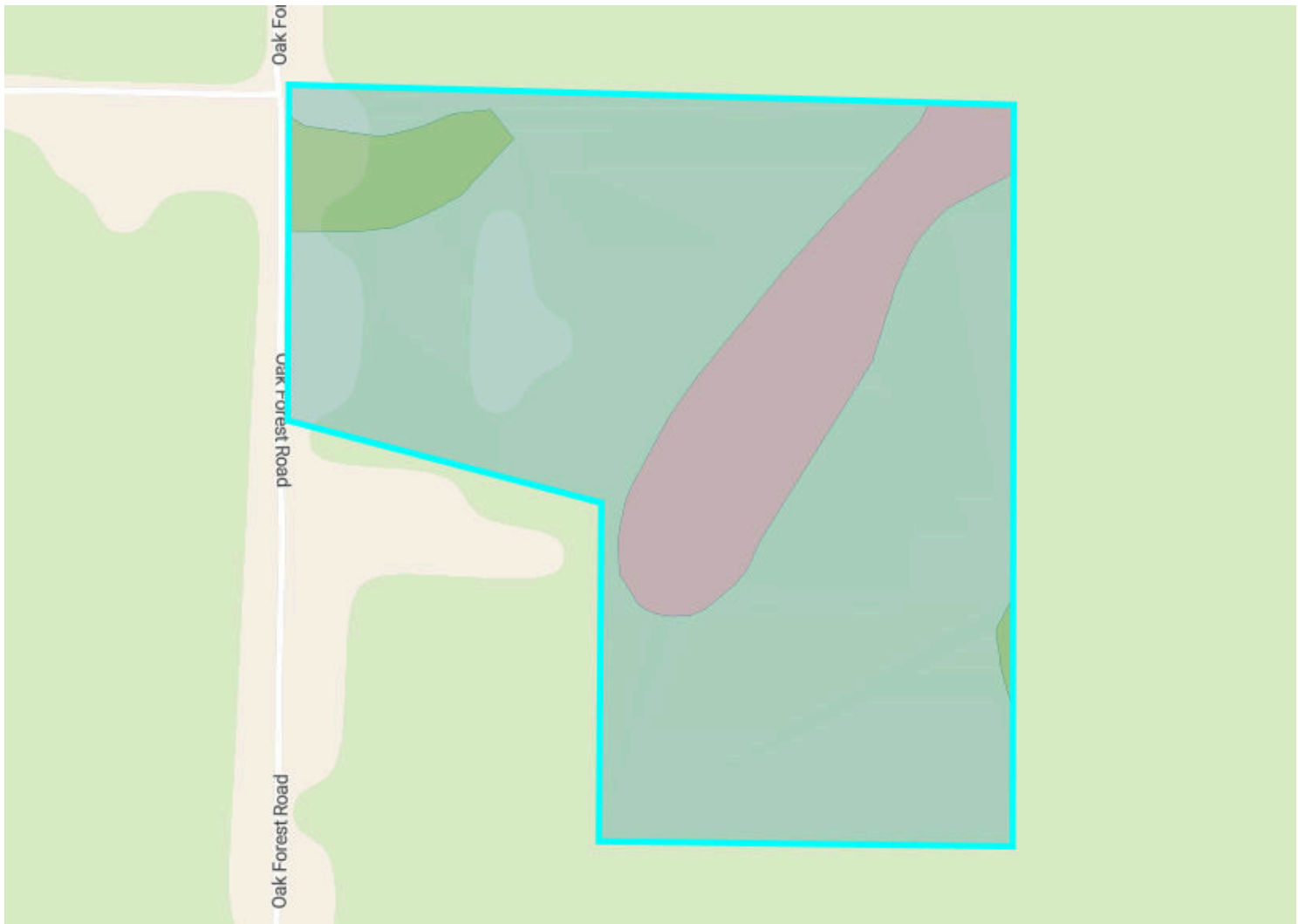
Gasconade County, MO
Township: 040N

Locations
32 40N 6W

Acres
32.45

Soils

32.5 Acres, 1 Boundary

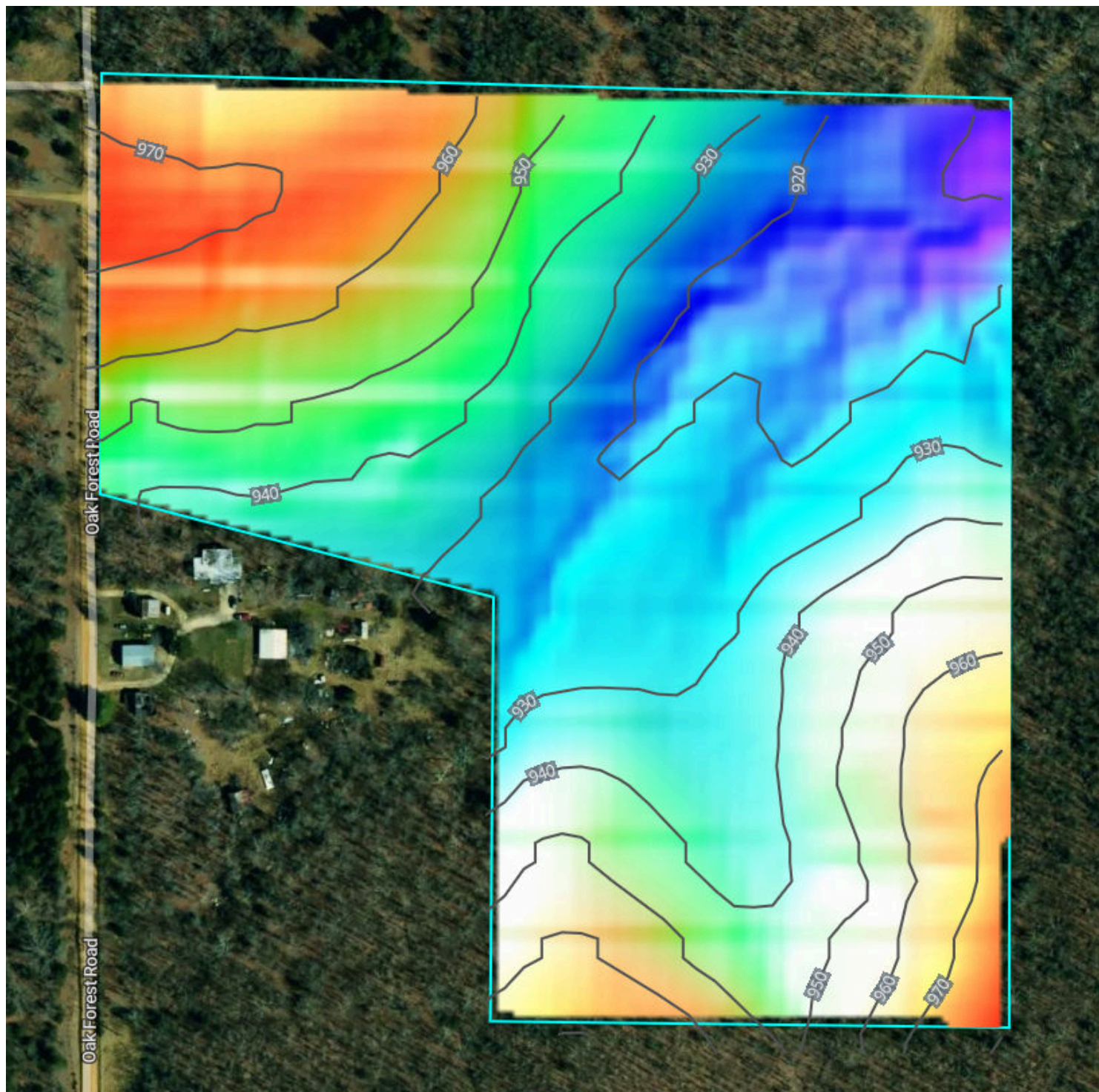


50.2/100 NCCPI

	Code	Soil Description	% of Selection	Acres	Non-IRR Class	IRR Class	NCCPI
●	73370	Beemont gravelly silt loam, 3 to 15 percent slopes	79.0%	25.6	4e	--	43.7
●	64000	Raccoon silt loam, 0 to 3 percent slopes, rarely flooded	16.2%	5.3	3w	--	79.5
●	73135	Union silt loam, 3 to 8 percent slopes	4.8%	1.6	3e	--	58.3

Elevation

32.5 Acres, 1 Boundary



906.2 feet

981.1 feet

Source: USGS 3 Meter Dem

Interval: 10 feet

Range: 74.9 feet

Min: 906.2 feet

Max: 981.1 feet

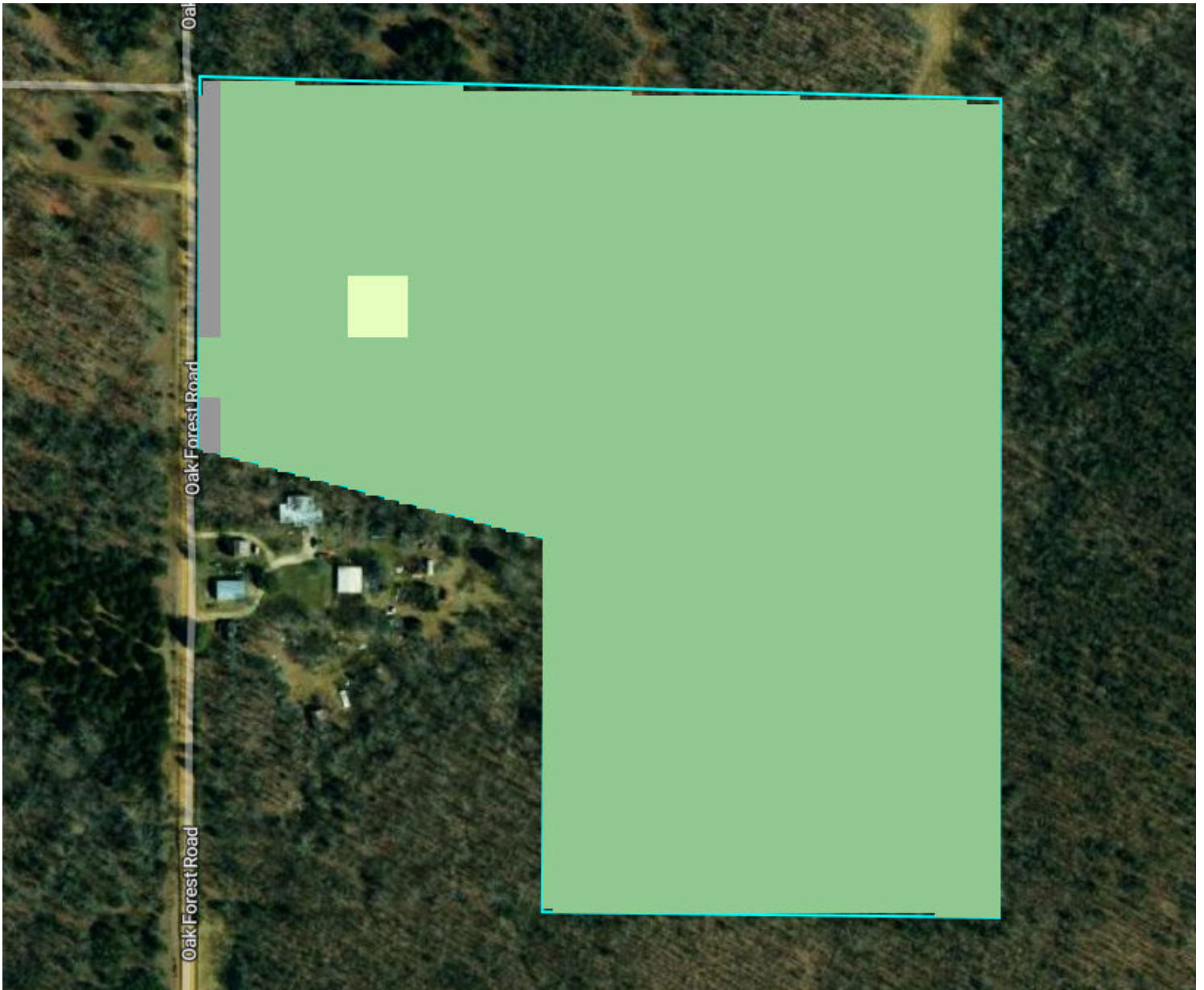
Slope: 6.9%



Min: 0.3%

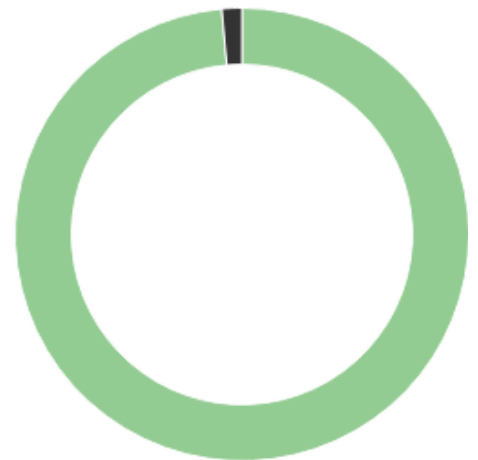
Max: 19.4%

Land Cover - 2024

32.5 Acres, 1 Boundary



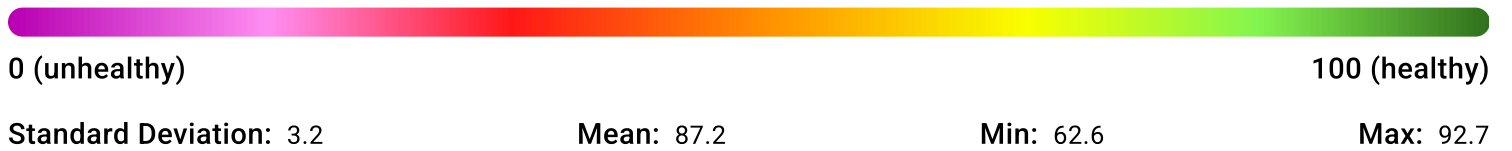
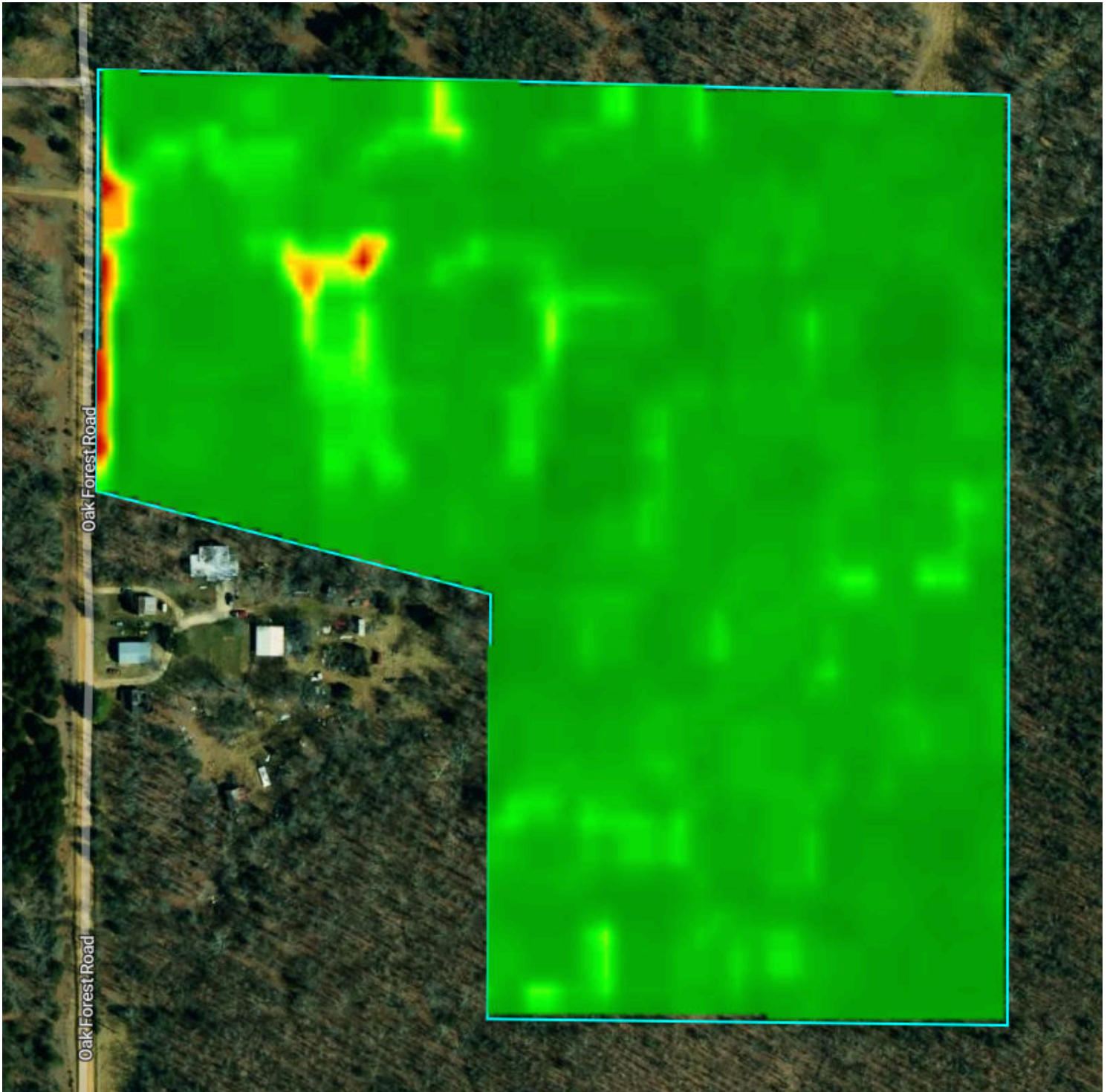
Type	% Coverage
 Deciduous Forest	98.6 %
 Other	1.4 %



Vegetation Index

32.5 Acres, 1 Boundary

2024





Flood (FEMA Report)

32.5 Acres, 1 Boundary



Flood Zone Hazard

- 0.2% annual flood hazard
- 1% annual flood hazard
- Future 1% annual flood hazard
- Increased risk due to levee
- Reduced risk due to levee
- Regulatory Floodway
- Special Floodway
- Wetlands

Historical Imagery

32.5 Acres, 1 Boundary

2022



2020

