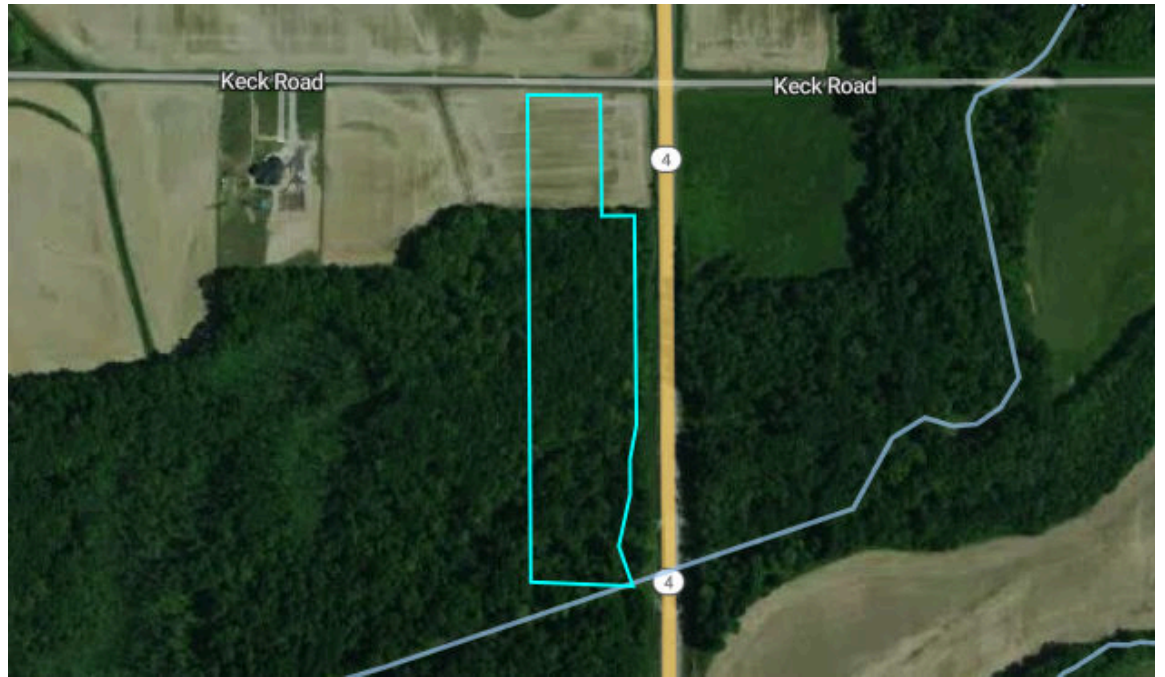


Madison County, IL

33.4 Acres

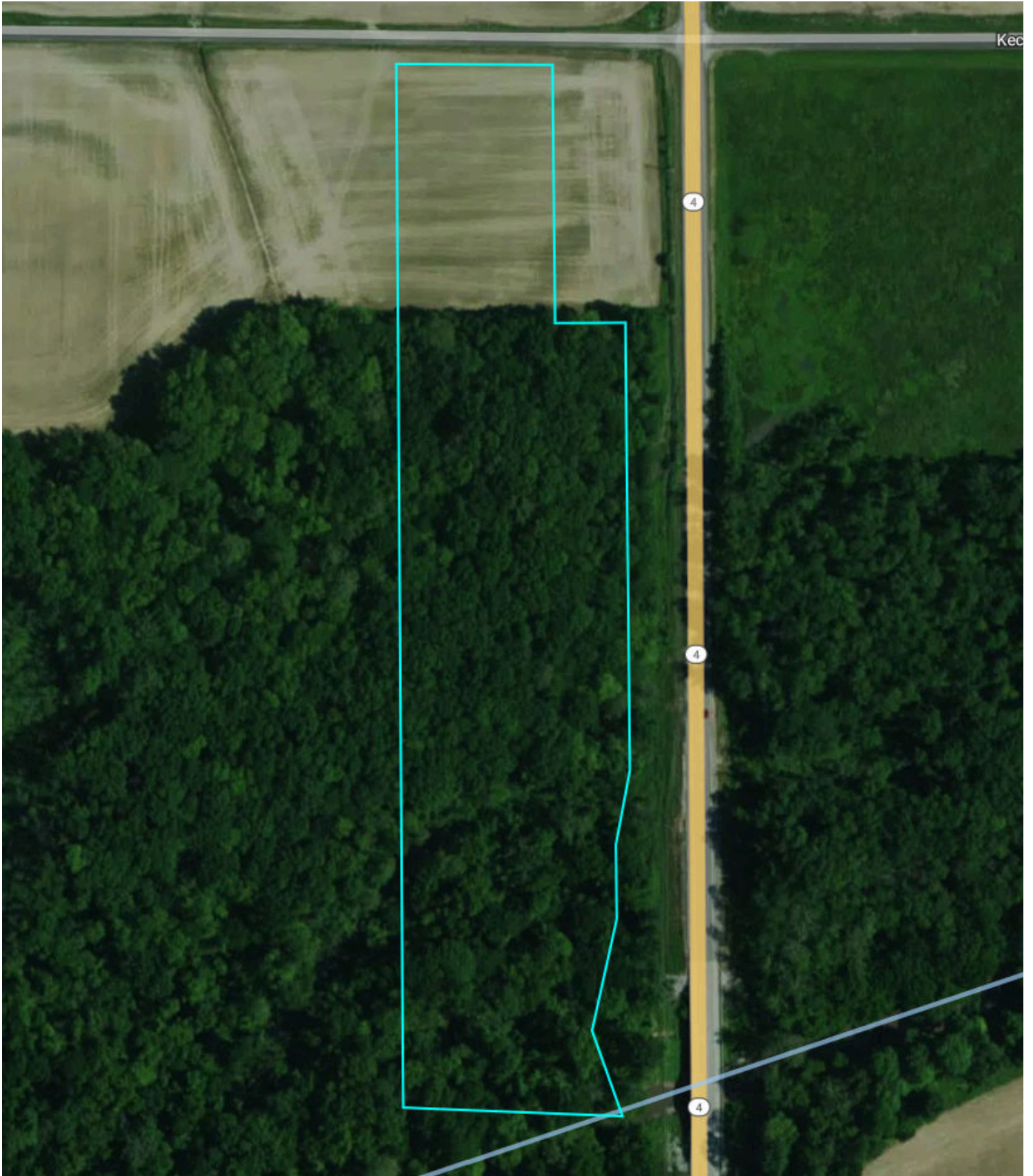


Elite Land and Auction

Overview

Madison County, IL

33.4 Acres, 1 Boundary



Overview

Madison County, IL

33.4 Acres, Boundary 1 of 1

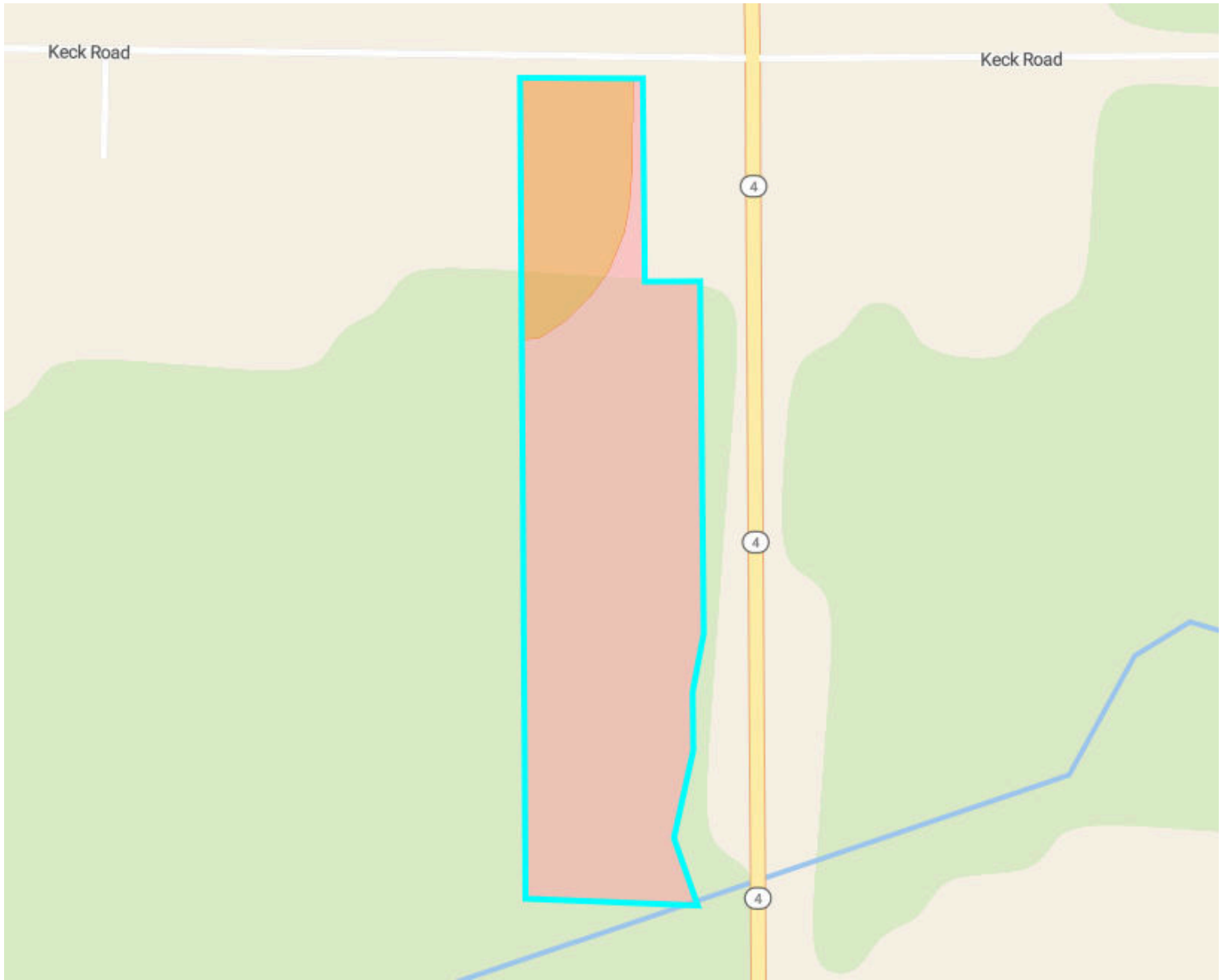


Madison County, IL Township: 003N	Locations 07 3N 6W	Acres 33.42	Parcel # 05-1-23-07-00-000-003
Owner 1 PETROFF PROPERTIES LLC -	Owner 2 -	Owner Address 3469 PETROFF PLZ GRANITE CITY IL 620406627	Property Address 9910 KECK RD, SAINT JACOB, IL 622811104
Total Assessed Value \$4,740	Assessed Land Value \$4,740	Assessed Improvement -	Assessed Land Year 2024
County Use Description AGRICULTURAL LAND		Legal Description NE NE EXC	

Soils

Madison County, IL

33.4 Acres, 1 Boundary



61.2/100 NCCPI

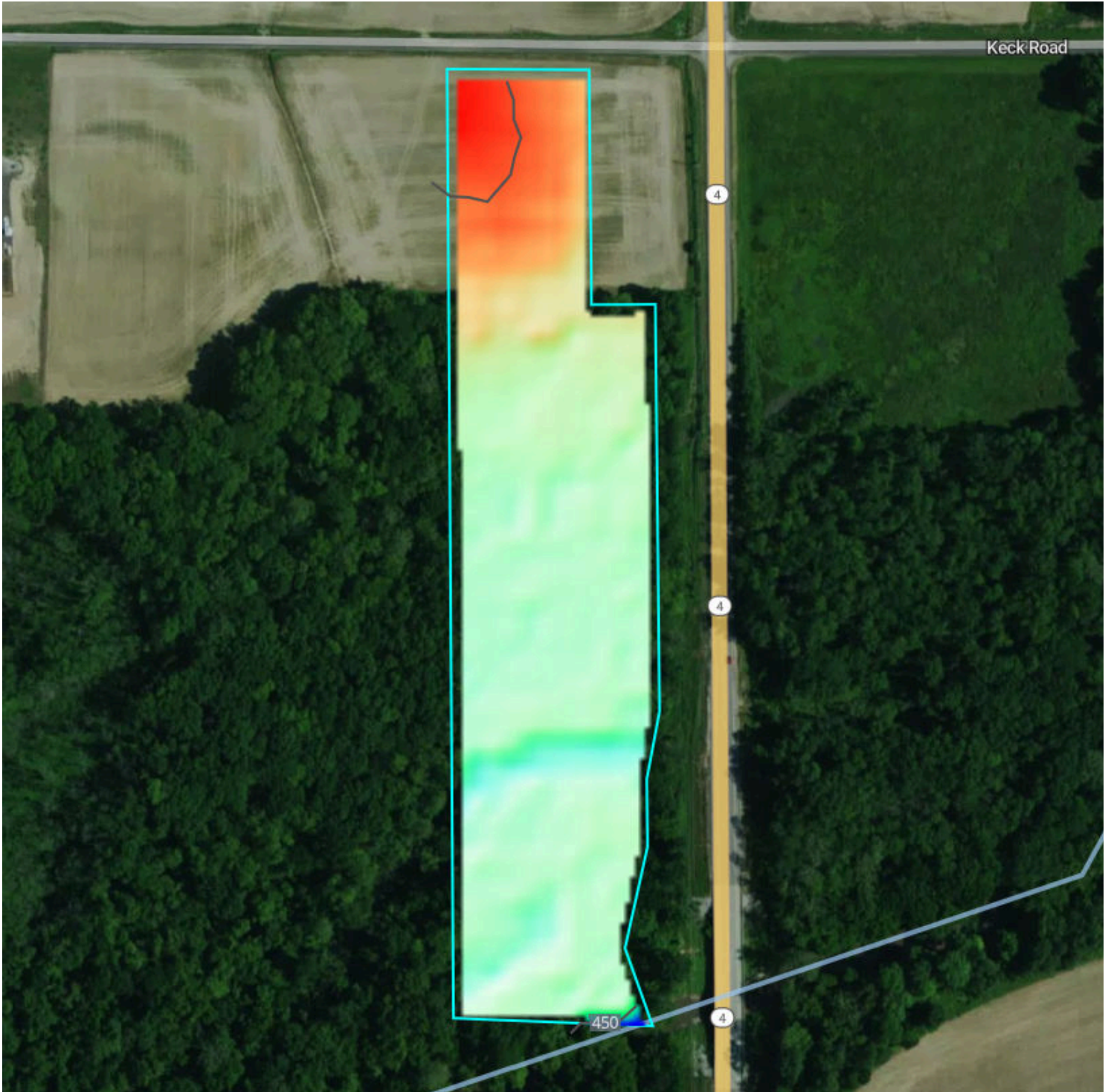
104.6/147 PI

	Code	Soil Description	% of Selection	Acres	Non-IRR Class	IRR Class	State Score (PI)	NCCPI
●	333...	Birds silt loam, 0 to 2 percent slopes, frequently flooded	81.4%	7.3	3w	--	105	55.4
●	517B	Marine silt loam, 2 to 5 percent slopes	18.6%	1.7	2e	--	103	86.7

Elevation

Madison County, IL

33.4 Acres, 1 Boundary



Source: USGS 3 Meter Dem	Interval: 10 feet	Range: 16.3 feet	Min: 445.2 feet	Max: 461.5 feet
		Slope: 1.2%	Min: 0%	Max: 17.4%

FSA

Madison County, IL

33.4 Acres, 1 Boundary

