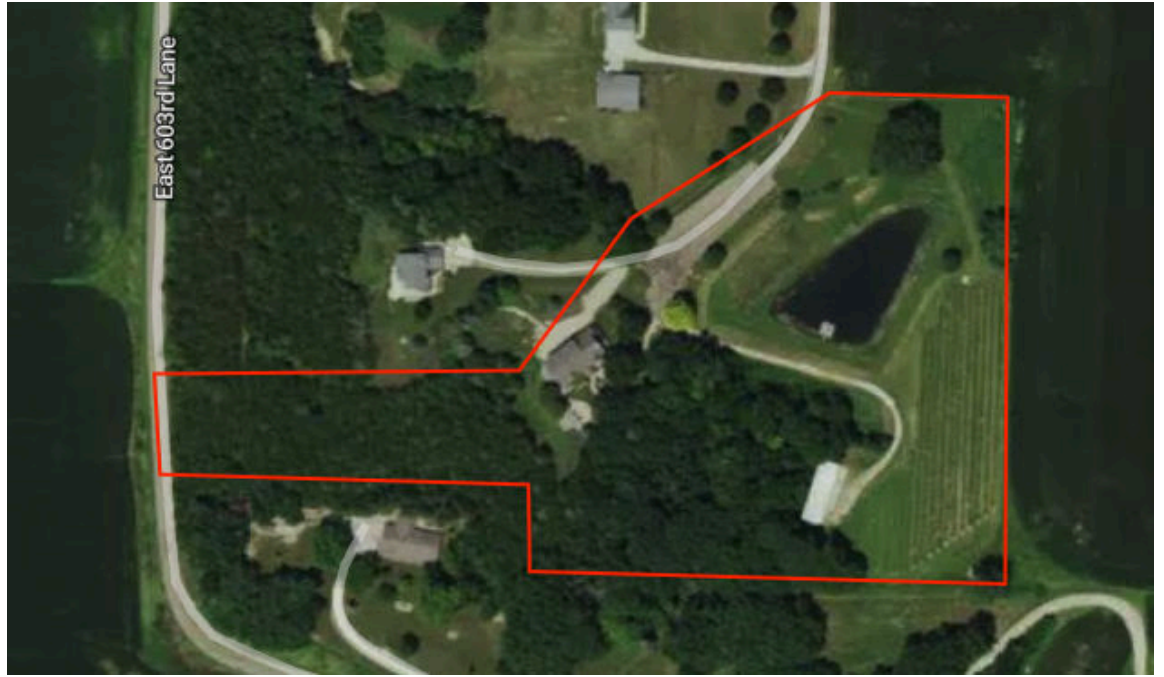


9.4 Acres



Overview

9.4 Acres, 1 Boundary



Overview

Adams County, IL

9.4 Acres, Boundary 1 of 1



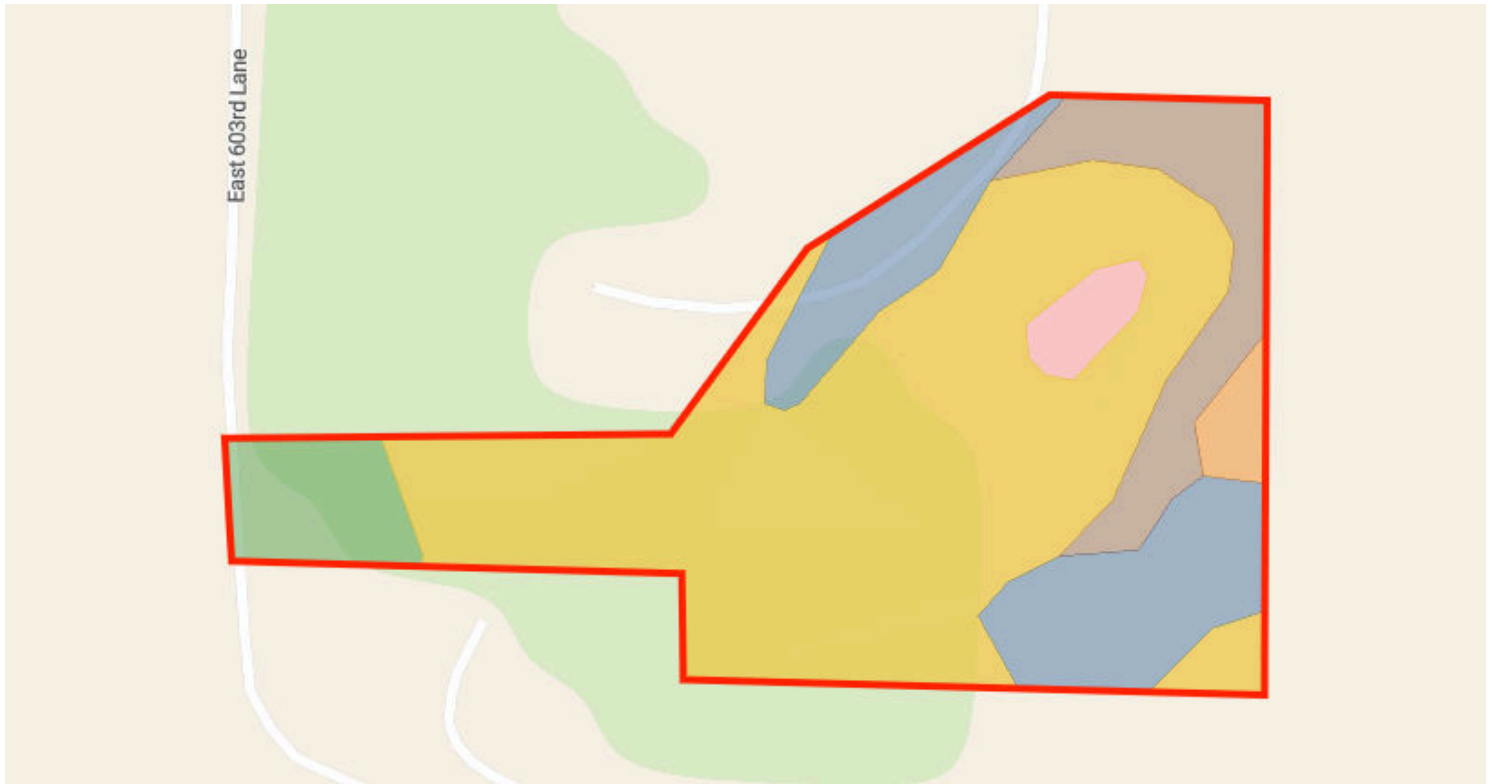
Adams County, IL
Township: 001N

Locations
12 1N 9W

Acres
9.44

Soils

9.4 Acres, 1 Boundary



31.3/100 NCCPI

63.9/147 PI

	Code	Soil Description	% of Selection	Acres	Non-IRR Class	IRR Class	State Score (PI)	NCCPI
●	856G	Stookey and Timula soils, 35 to 60 percent slopes	122.2%	11.5	7e	--	55	19.9
●	216B	Stookey silt loam, 2 to 5 percent slopes	17.5%	1.6	2e	--	114	89.5
●	271...	Timula silt loam, 10 to 18 percent slopes, eroded	10.9%	1	4e	--	99	70.9
●	785G	Lacrescent channery silt loam, 35 to 60 percent slopes	6.2%	0.6	7e	--	39	14.7
●	W	Water	2.4%	0.2	8w	--		0

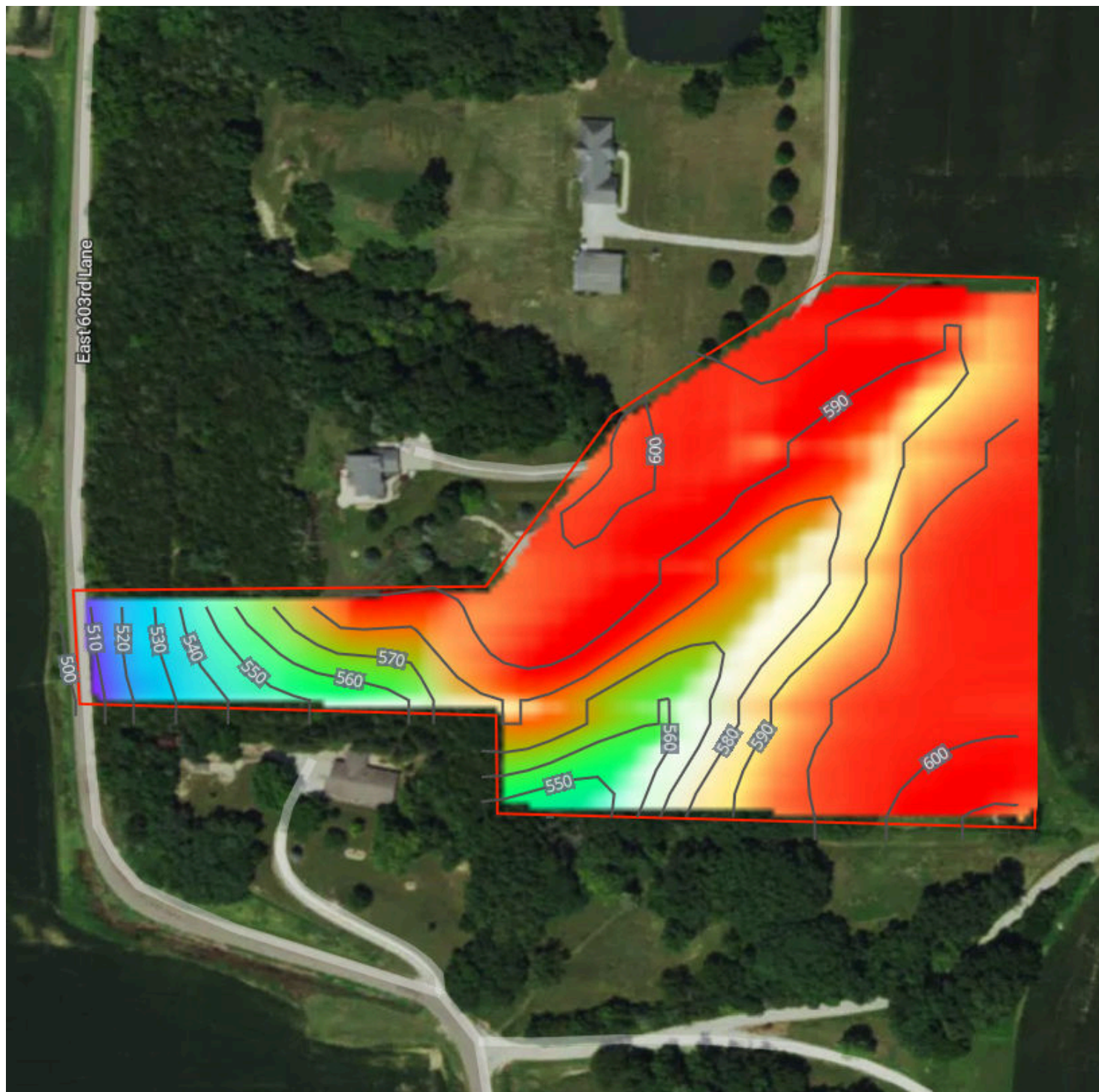
Soils

9.4 Acres, 1 Boundary

	Code	Soil Description	% of Selection	Acres	Non-IRR Class	IRR Class	State Score (PI)	NCCPI
●	678A	Mannon silt loam, 0 to 2 percent slopes	2.0%	0.2	1	--	133	93.4

Elevation

9.4 Acres, 1 Boundary



497.6 feet

605.9 feet

Source: USGS 3 Meter Dem

Interval: 10 feet

Range: 108.4 feet

Min: 497.6 feet

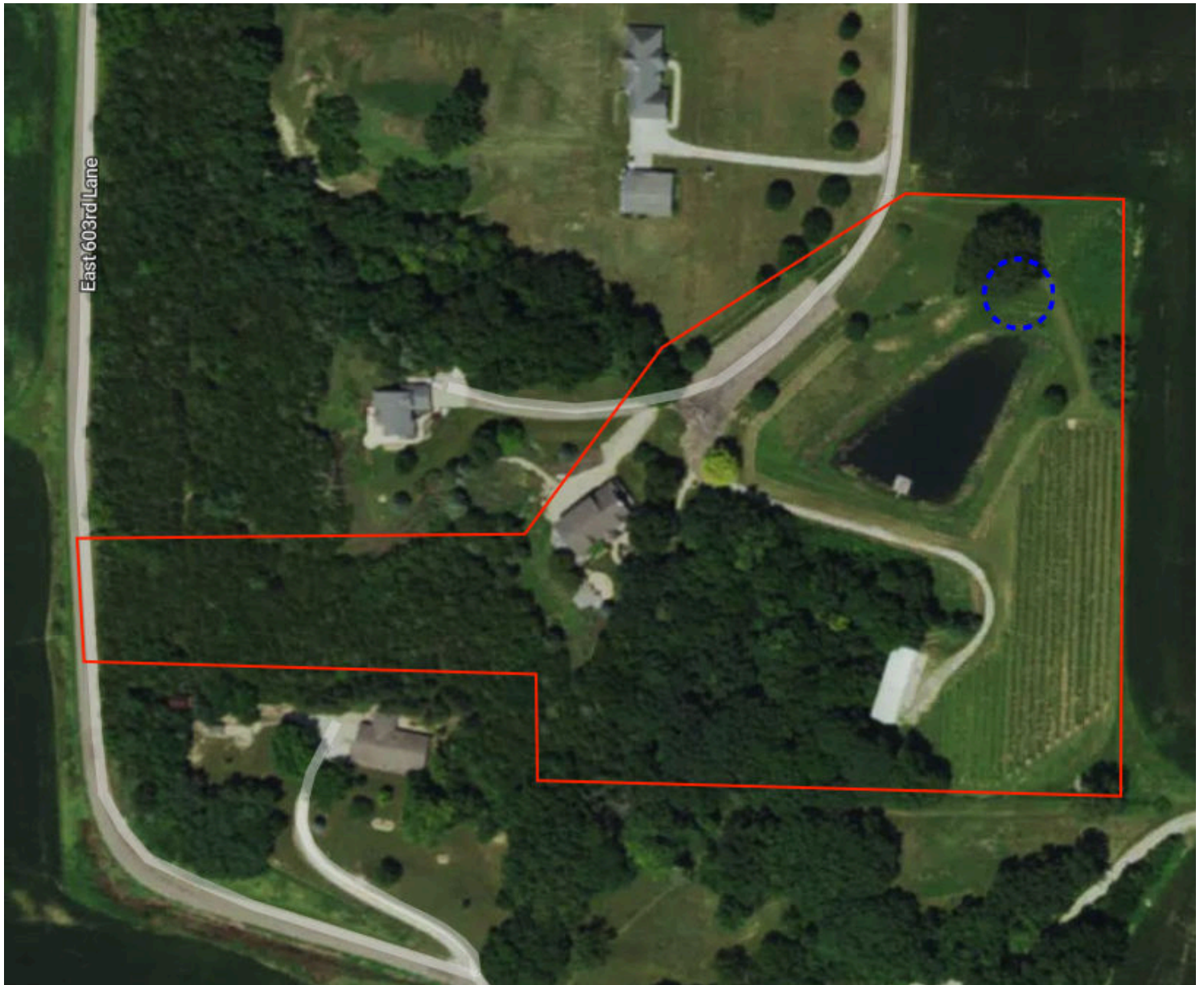
Max: 605.9 feet

Slope: 12.8%

Min: 0.1%

Max: 34.4%





Flood Zone Hazard

- 0.2% annual flood hazard
- 1% annual flood hazard
- Future 1% annual flood hazard
- Increased risk due to levee
- Reduced risk due to levee
- Regulatory Floodway
- Special Floodway
- Wetlands

Historical Imagery

9.4 Acres, 1 Boundary

2023



2021

